

# FINISHES

By Actiu



# MFC - HPL - COMPACT LAMINATE

	LIME OAK	MAPLE	LIGHT OAK	CHESTNUT	DARK OAK	WHITE	COCO GREY	BLACK
MFC	11	18	10	07	14	00	15	03 / 08
C.LAMINATE						30		38
* HPL						* 20		

\* ONLY FOR PROJECTS



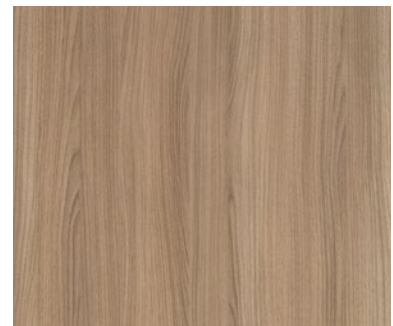
LIME OAK

MAJESTIC ACACIA



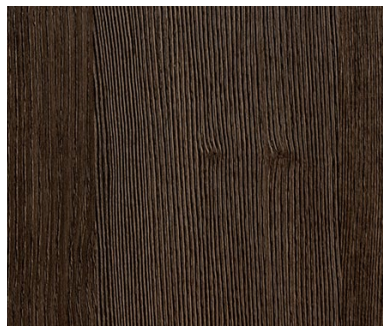
LIGHT OAK

\*ROBLE NEW



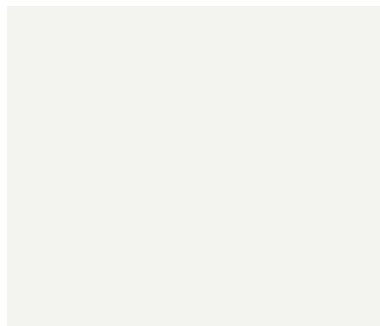
CHESTNUT

NOGAL NAB



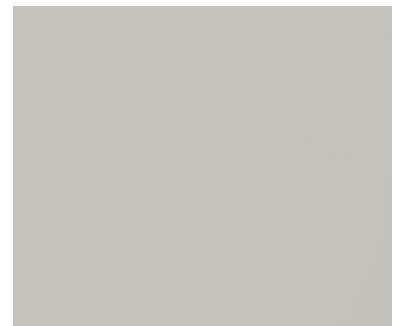
DARK OAK

FRESNO AHUMADO



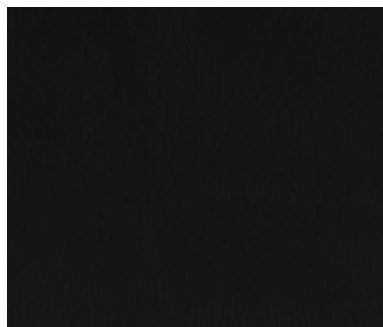
WHITE

GRIS UGN



COCO GREY

GRIS COCO



BLACK

PERFECT SENSE

MAPLE (18) FINISH WILL BE DISCONTINUED ONCE THE STOCKS FINISHED





### MELAMINE TECHNICAL SPECIFICATIONS

High density particle desk top with PEFC certification covered in heavyweight laminate. It presents an optimal surface, silky to touch with high durability and 100% recyclable.

Optimal surface characteristics according to the standard EN 14322  
Optimal brightness values for working plans according to UNE 89401-2  
Perfect machined characteristics

This product meets the requirements of Class E1 as defined in European Standard EN 14322:2017.  
Surfaces manufactured from chipboard and hot melt laminated surfaces certified to US EPA TSCA Title VI and CARB Phase 2 emission standards and products with reduced formaldehyde emission E05 (< 0.05 ppm EN 717-1).

### LAMINATE TECHNICAL SPECIFICATIONS

High-density particle board made with PEFC certification and 0.7mm thick high pressure laminate (HPL) coatings with thermosetting resins.

Excellent scratch resistance, extreme chemical and moisture resistance.  
Completely non-toxic, resistant and easy to clean.

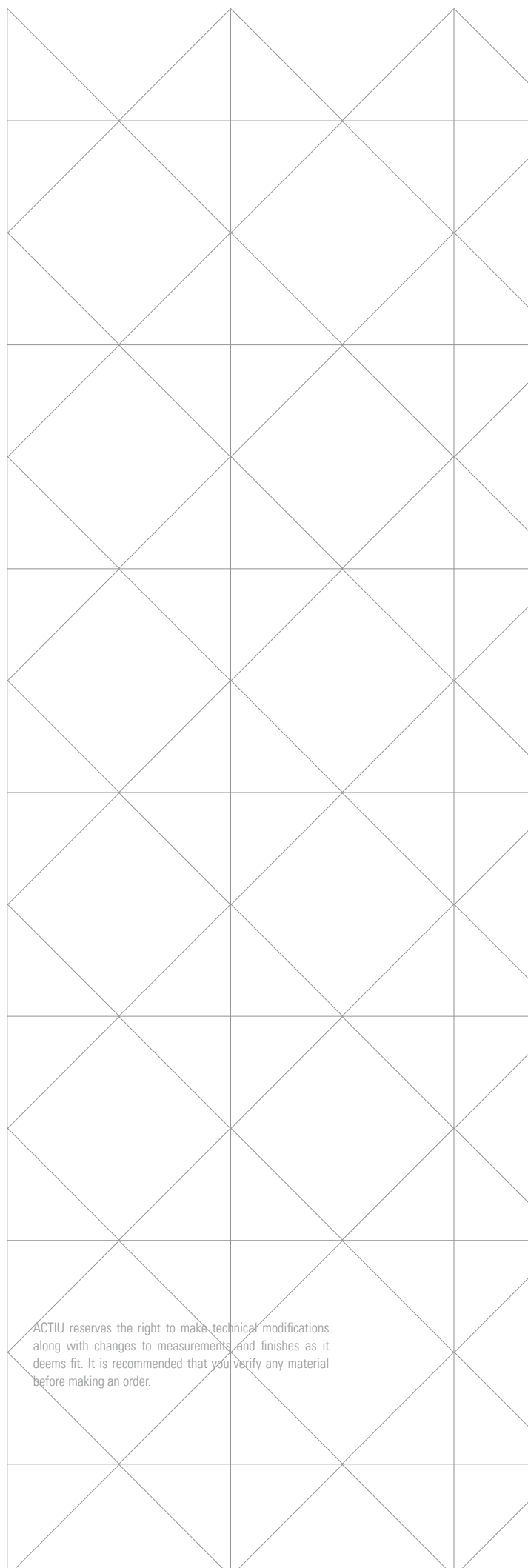
#### High Pressure Laminates (HPL):

Manufactured using several sheets of Kraft paper impregnated with phenolic resins with a sheet of decorative paper impregnated with melamine resins applied to one or both surfaces. The resin is cured in special presses, using the combined and coordinated action of heat (150°C) and pressure (90kg/cm<sup>2</sup>)

### COMPACT LAMINATE TECHNICAL SPECIFICATIONS

Compact desktop of 13 mm thickness and black coloured core manufactured entirely of high-pressure laminate (HPL) with termoestables phenolic resins.

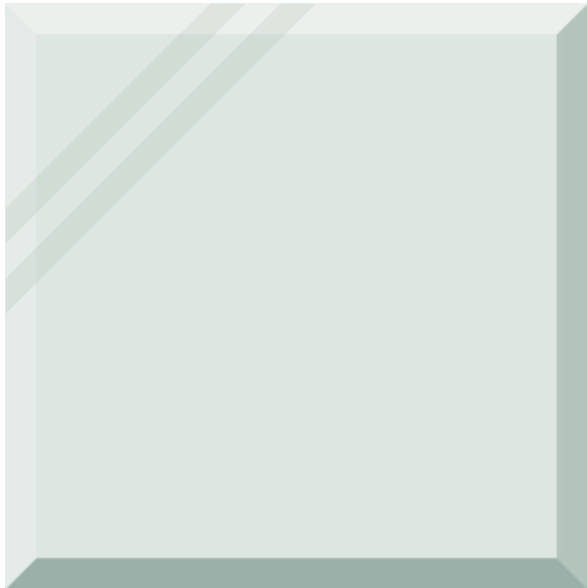
Great resistance to abrasion, scratches and impact.  
Resistance to water, moisture and high levels of steam  
Highly resistant to many chemical products.  
Hygienic.



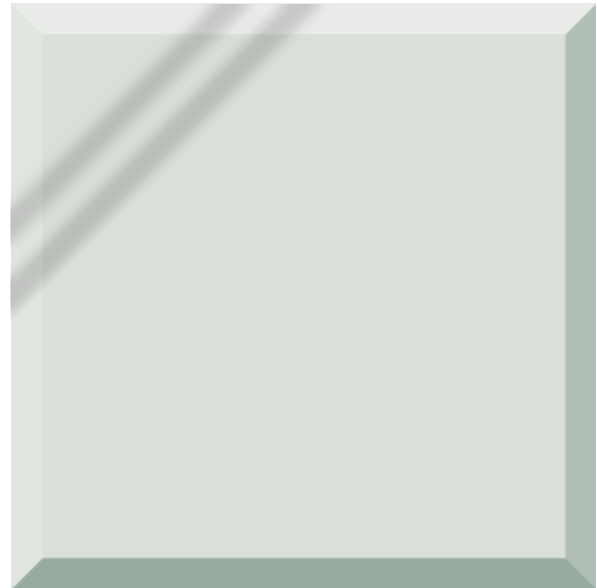
ACTIU reserves the right to make technical modifications along with changes to measurements and finishes as it deems fit. It is recommended that you verify any material before making an order.



# GLASS



51 CLEAR



50 FROSTED



59 BLACK



52 WHITE



### TECHNICAL SPECIFICATIONS GLASS

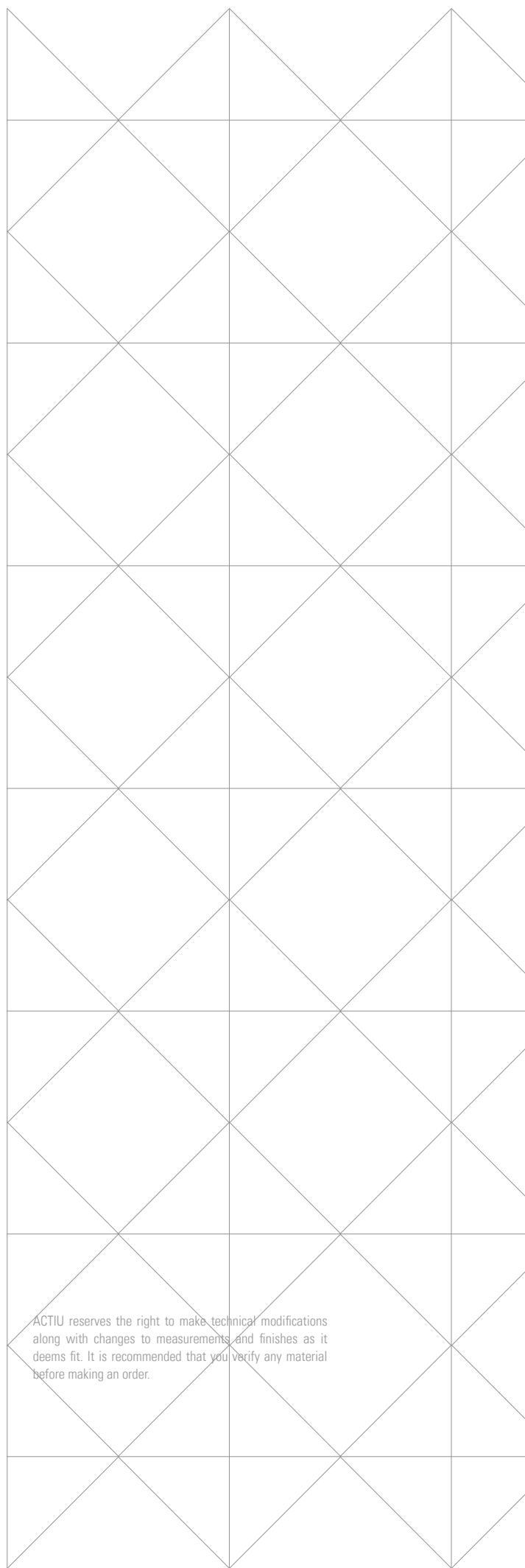
**Laminated Security** glass with internal translucent layer. Thickness available in 5+5 and 6+6 mm for desk surfaces. 4+4 mm for Screens, reception counter front panels and glass doors.

The laminated glass is the result of linking two or more glass sections, linked by PVB layers (butiral polivinil). This material combines the specific glass properties such as transparency and durability, and the proper PVB features such as adhesion to the glass, elasticity and impact resistance, acoustic and UV protection, as well as providing different colour ranges.

The high elasticity of the PVB provides a high impact resistance, so before an impact on the glass, the PVB layer absorbs the impact energy and due to the adhesion, keeps linked to the glass

### Extra clear tempered glass

Low level of iron oxide, it offers colourless luminosity (with not green tones) 10 mm thickness. The tempered glass has maximum high scratch and impact resistance. 100% Recyclable.



ACTIU reserves the right to make technical modifications along with changes to measurements and finishes as it deems fit. It is recommended that you verify any material before making an order.

