



Finishes and Upholsteries



942

 **LUXY.**

CATEGORIA TP/
CATEGORY TP

RIVESTIMENTO/
UPHOLSTERY

 **ZENITH**
GRUPPO
MASTROTTO



949



929



907



947



945



946



931



927



921



944



928



930



950



914



900



948



910



943



932



933



DESTINAZIONI D'USO/ APPLICATIONS
Rivestimenti per imbottiti, casa, ufficio e contract/
Offices, hotels, institutions, domestic use

**RESISTENZA ALLO STRAPPO PANTALONE/
TEAR STRENGTH SINGLE EDGE TEAR**
UNI EN ISO 3377-1 (N) ≥ 20

**SOLIDITÀ DEL COLORE ALLO STROFINIO - SECCO 500 CICLI/
COLOUR FASTNESS TO RUBBING - DRY 500 CYLCES**
UNI EN ISO 11640 ≥ 4

**SOLIDITÀ DEL COLORE ALLO STROFINIO - UMIDO 250 CICLI/
COLOUR FASTNESS TO RUBBING - WET 250 CYLCES**
UNI EN ISO 11640 ≥ 4

**SOLIDITÀ DEL COLORE ALLO STROFINIO - SUDORE 80 CICLI/
COLOUR FASTNESS TO RUBBING - SWEAT 80 CYLCES**
UNI EN ISO 11640 ≥ 4
ISO 11641 pH8

**RESISTENZA ALLE FLESSIONI - SECCO 50.000 CICLI/
FLEXING ENDURANCE - DRY 50.000 CYCLES**
UNI EN ISO 5402 Nessun danno
No damage

**ADESIONE ALLA REFINIZIONE - A SECCO/
FINISH ADHESION - DRY (N/cm)**
UNI EN ISO 11644 ≥ 2

**SOLIDITÀ DEL COLORE ALLA LUCE ARTIFICIALE /
COLOUR FASTNESS TO ARTIFICIAL LIGHT**
UNI EN ISO 102-B02 ≥ 5

ZENITH

CARATTERISTICHE/ DESCRIPTION
Pelle bovina di provenienza asiatica, smerigliata
e stampata
Superficie media 3.8 - 4.0 m²
Spessore 0.8 - 1.0 mm

Bovine of Asian origin, corrected and embossed
The average size of each hide is 3.8 - 4.0 m²
Thickness 0.8 - 1.0 mm

INFIAMMABILITÀ/ FLAMMABILITY
BS 5852:1979
EN 1021 - 1
EN 1021 - 2

**MANUTENZIONE E PULIZIA/ MAINTENANCE
AND CLEANING**
Spolverare periodicamente con panno bianco pulito,
asciutto e non abrasivo. Per le macchie: rimuovere
rapidamente la macchia dalla superficie, tamponando
con un panno o carta assorbente. Successivamente,
con un panno pulito imbevutodi una soluzione
d'acqua e sapone neutro bianco, strofinare
delicatamente dall'esterno verso l'interno della
macchia. L'uso dei detersivi per piatti o simili è
sconsigliato. Potrebbe lasciare residui di prodotto
sulla fibre del rivestimento.

Dust periodically using a soft white, dry and non-
abrasive cloth. For stains: remove the stain from
the surface quickly, soaking it up using a cloth or
kitchen paper. Then rub delicately from the outside
of the stain towards the inside with a clean cloth
soaking in a solution of water and neutral white
soap. The use of dish detergents or similar is not
recommended. It may leave product residue on the
coating fibers.

5 ANNI DI GARANZIA/ 5 YEAR WARRANTY
**REVISIONE TESSUTI 05-2021/
FABRIC REVIEW 2021-05**



0575
Numero di Certificato: N°0907/MED-1/082
www.kimber-angelo.it/0575
Numero di Certificato: no. 20889
Reg. II-2/2, Reg. II-2/2, Reg. II-2/2, Reg. II-2/2, Reg. II-2/2
Reg. II-2/2, Reg. II-2/2, Reg. II-2/2, Reg. II-2/2, Reg. II-2/2
MD Res 97(2017) - 12000 HSC Code 2, 3
MD Res 97(2017) - 12000 HSC Code 2, 3
MD/ MSC/ Cir. 102



939

 **LUXY.**

CATEGORIA TP/
CATEGORY TP

RIVESTIMENTO/
UPHOLSTERY

 **ZENITH**
GRUPPO MASTROTTO



941



934



935



908



905



940



906



938



954



955



937



953



936



901



901



DESTINAZIONI D'USO/ APPLICATIONS
Rivestimenti per imbottiti, casa, ufficio e contract/
Offices, hotels, institutions, domestic use

**RESISTENZA ALLO STRAPPO PANTALONE/
TEAR STRENGTH SINGLE EDGE TEAR**
UNI EN ISO 3377-1 (N) ≥ 20

**SOLIDITÀ DEL COLORE ALLO STROFINIO - SECCO 500 CICLI/
COLOUR FASTNESS TO RUBBING - DRY 500 CYLCES**
UNI EN ISO 11640 ≥ 4

**SOLIDITÀ DEL COLORE ALLO STROFINIO - UMIDO 250 CICLI/
COLOUR FASTNESS TO RUBBING - WET 250 CYLCES**
UNI EN ISO 11640 ≥ 4

**SOLIDITÀ DEL COLORE ALLO STROFINIO - SUDORE 80 CICLI/
COLOUR FASTNESS TO RUBBING - SWEAT 80 CYLCES**
UNI EN ISO 11640 ≥ 4
ISO 11641 pH8

**RESISTENZA ALLE FLESSIONI - SECCO 50.000 CICLI/
FLEXING ENDURANCE - DRY 50.000 CYCLES**
UNI EN ISO 5402 Nessun danno
No damage

**ADESIONE ALLA REFINIZIONE - A SECCO/
FINISH ADHESION - DRY (N/cm)**
UNI EN ISO 11644 ≥ 2

**SOLIDITÀ DEL COLORE ALLA LUCE ARTIFICIALE /
COLOUR FASTNESS TO ARTIFICIAL LIGHT**
UNI EN ISO 102-B02 ≥ 5

ZENITH

CARATTERISTICHE/ DESCRIPTION
Pelle bovina di provenienza asiatica, smerigliata
e stampata
Superficie media 3.8 - 4.0 m²
Spessore 0.8 - 1.0 mm

Bovine of Asian origin, corrected and embossed
The average size of each hide is 3.8 - 4.0 m²
Thickness 0.8 - 1.0 mm

INFIAMMABILITÀ/ FLAMMABILITY
BS 5852:1979
EN 1021 - 1
EN 1021 - 2

**MANUTENZIONE E PULIZIA/ MAINTENANCE
AND CLEANING**
Spolverare periodicamente con panno bianco pulito,
asciutto e non abrasivo. Per le macchie: rimuovere
rapidamente la macchia dalla superficie, tamponando
con un panno o carta assorbente. Successivamente,
con un panno pulito imbevutodi una soluzione d'acqua
e sapone neutro bianco, strofinare delicatamente dall'esterno
verso l'interno della macchia. L'uso dei detersivi per piatti
o simili è sconsigliato. Potrebbe lasciare residui di prodotto
sulla fibre del rivestimento.

Dust periodically using a soft white, dry and non-
abrasive cloth. For stains: remove the stain from the
surface quickly, soaking it up using a cloth or kitchen
paper. Then rub delicately from the outside of the stain
towards the inside with a clean cloth soaking in a solution
of water and neutral white soap. The use of dish detergents
or similar is not recommended. It may leave product residue
on the coating fibers.

5 ANNI DI GARANZIA/ 5 YEAR WARRANTY
**REVISIONE TESSUTI 05-2021/
FABRIC REVIEW 2021-05**



0575
Numero di Certificato: N°0907/MED-1/082
www.kimber-angelo.it/0575
Numero di Certificato: no. 20889
Reg. II-2/2, Reg. II-2/2, Reg. II-2/2, Reg. II-2/2, Reg. II-2/2
Reg. II-2/2, Reg. II-2/2, Reg. II-2/2, Reg. II-2/2, Reg. II-2/2
MD Res 97(2013) - 12000 HSC Code 2
MD Res 97(2013) - 12000 HSC Code 2
MD/ MSC/ Cir. 102



LX03

 **LUXY.**

CATEGORIA TOP /
CATEGORY TOP

RIVESTIMENTO /
UPHOLSTERY

LINEA
 GRUPPO
MASTROTTO



LX01



LX02



LX07



LX04



LX09



LX08



LX05



LX06



LX12



LX11



LX15



LX10



LX13



LX16



LX14



LX17



LX20



LX19



LX18





DESTINAZIONI D'USO/ APPLICATIONS
Rivestimenti per imbottiti, casa,
ufficio e contract/ Offices, hotels, institutions,
domestic use

**RESISTENZA ALLO STRAPPO PANTALONE/
TEAR STRENGHT SINGLE EDGE TEAR**
UNI EN ISO 3377-1 (N) ≥ 20

**SOLIDITÀ DEL COLORE ALLO STROFINIO - SECCO 500 CICLI/
COLOUR FASTNESS TO RUBBING - DRY 500 CYLCES**
UNI EN ISO 11640 ≥ 4

**SOLIDITÀ DEL COLORE ALLO STROFINIO - UMIDO 250 CICLI/
COLOUR FASTNESS TO RUBBING - WET 250 CYLCES**
UNI EN ISO 11640 ≥ 4

**SOLIDITÀ DEL COLORE ALLO STROFINIO - SUDORE 80 CICLI/
COLOUR FASTNESS TO RUBBING - SWEAT 80 CYLCES**
UNI EN ISO 11640 ≥ 4
ISO 11641 pH8

**RESISTENZA ALLE FLESSIONI - SECCO 50.000 CICLI/
FLEXING ENDURANCE - DRY 50.000 CYCLES**
UNI EN ISO 5402 Nessun danno
No damage

**ADESIONE ALLA REFINIZIONE - A SECCO/
FINISH ADHESION - DRY (N/cm)**
UNI EN ISO 11644 ≥ 2

**SOLIDITÀ DEL COLORE ALLA LUCE ARTIFICIALE/
COLOUR FASTNESS TO ARTIFICIAL LIGHT**
UNI EN ISO 102-B02 ≥ 5

INFIAMMABILITÀ/ FLAMMABILITY
TB 117:2013
BS 5852:1979
EN 1021 - 1
EN 1021 - 2



LINEA

CARATTERISTICHE/ DESCRIPTION
Pelle bovina di provenienza europea, mezzo
fiore a grana naturale
Superficie media 4.8 - 5.9 m²
Spessore finito 0.9 - 1.1 mm
Il cambio di sfumature e i segni presenti in superficie
sono le prerogative di questa pelle dalla mano piena
e morbida

Bovine of European origin, lightly buffed natural grain
The average size of each hide is around 4.5 - 5.0 m²
Finished thickness 0.9 - 1.1 mm
Different tones and superficial marks are the
peculiarities of this smooth leather

MANUTENZIONE E PULIZIA/ MAINTENANCE AND CLEANING
Spolverare periodicamente con panno bianco
pulito, asciutto e non abrasivo. Per le macchie:
rimuovere rapidamente la macchia dalla superficie,
tamponando con un panno o carta assorbente.
Successivamente, con un panno pulito imbevuto
di una soluzione d'acqua e sapone neutro bianco,
strofinare delicatamente dall'esterno verso l'in-
terno della macchia. L'uso dei detergenti per piatti
o simili è sconsigliato. Potrebbe lasciare residui
di prodotto sulla fibre del rivestimento

Dust periodically using a soft white, dry and non-
abrasive cloth. For stains: remove the stain from the
surface quickly, soaking it up using a cloth or kitchen
paper. Then rub delicately from the outside of the stain
towards the inside with a clean cloth soaking in a so-
lution of water and neutral white soap. The use of dish
detergents or similar is not recommended. It may
leave product residue on the coating fibers

5 ANNI DI GARANZIA/ 5 YEAR WARRANTY
**REVISIONE TESSUTI 05-2021/
FABRIC REVIEW 2021-05**





LX26

 **LUXY.**

CATEGORIA TOP /
CATEGORY TOP

RIVESTIMENTO /
UPHOLSTERY

 **LINEA**
GRUPPO MASTROTTO



LX22



LX21



LX23



LX24



LX30



LX29



LX28



LX27



LX25





1875

 **LUXY.**

CATEGORIA K/
CATEGORY K

TESSUTO/
UPHOLSTERY

BLAZER
camira



1899



1877



1888



1878



1893



1883



1892



1852



1866



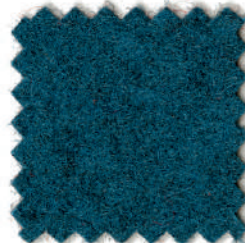
1859



1880



1857



1897



1870



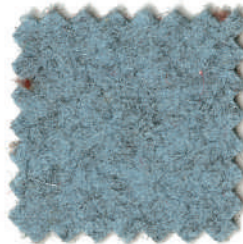
1887



1855



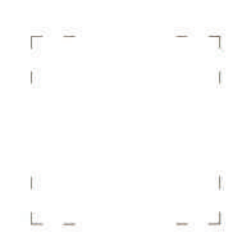
1885



1872



1853





DESTINAZIONI D'USO/ APPLICATIONS

Rivestimenti per ufficio, ambienti educativi.
Se sottoposto a trattamento antifiamma: alberghi e pubblici esercizi/ Workplace, education, home. When FR treated: Hospitality and leisure

RESISTENZA ALL'ABRASIONE (CICLI MARTINDALE)/ ABRASION RESISTANCE (MARTINDALE CYCLES)

EN ISO 12947-2 ≥ 50.000

RESISTENZA ALLO SFREGAMENTO/ FASTNESS TO RUBBING (EN ISO 105 - X12)

Umido/ Wet 4
Secco/ Dry 4

SOLIDITÀ ALLA LUCE/ LIGHT FASTNESS (EN ISO 105 - B12) 5

MANUTENZIONE E PULIZIA/ MAINTENANCE AND CLEANING

Aspirare regolarmente. Pulire con un panno umido utilizzando acqua e sapone oppure usare un detergente specifico per tessuti da rivestimento. Per una pulizia più approfondita ricorrere al vapore oppure ad un lavaggio professionale a secco/ Vacuum regularly. Clean with a damp cloth using soap and water or use a specific detergent for upholstery fabrics. For deeper cleaning, use steam or professional dry cleaning

BLAZER

CARATTERISTICHE/ DESCRIPTION

100% pura Lana Vergine
Altezza 140 cm
Peso 460 g/m²
Possono verificarsi differenze di colore

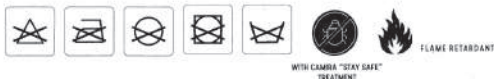
100% pure new wool
Width 140 cm
Weight 460 g/m²
Differences in color may occur

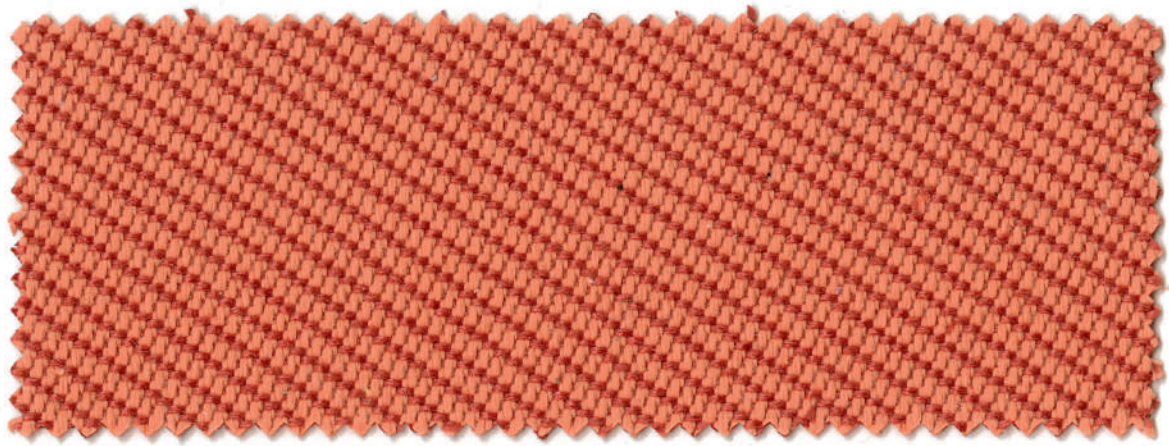
INFIAMMABILITÀ/ FLAMMABILITY

11M UNI 9175
EN 1021 -1
EN 1021 -2
BS7176 Low Hazard
NF D 60-013
OENORM B 3824 & A 3800-1 (su schiumato modificato con combustione ad alta resilienza con densità 58 kg/m³/ Over CMHR 58 Kg/m³ foam)
BS 476 Part 7 Classe 1 (adhered)
EN 13051-1 Adhered Class D, s1, d0
IMO FTP CODE (Part 8)

10 ANNI DI GARANZIA/ 10 YEAR WARRANTY

REVISIONE TESSUTI 05-2021/
FABRIC REVIEW 2021-05





1907

 **LUXY.**

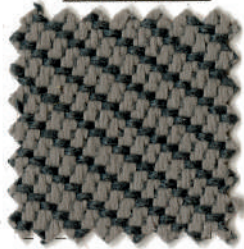
CATEGORIA K/
CATEGORY K

TESSUTO/
UPHOLSTERY

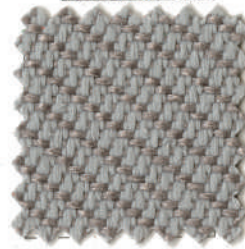
OCEANIC
camira



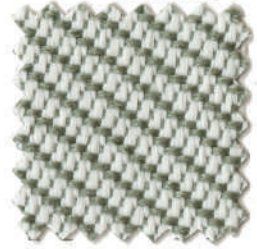
1949



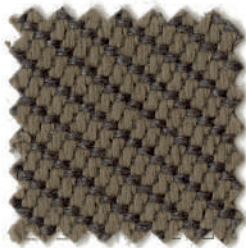
1934



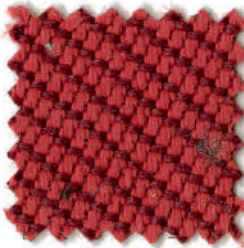
1942



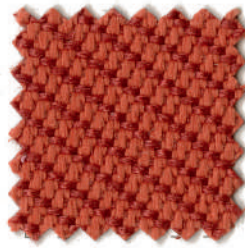
1925



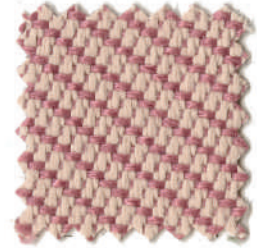
1933



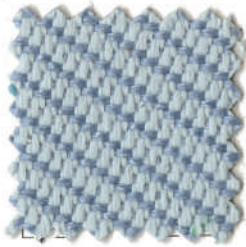
1910



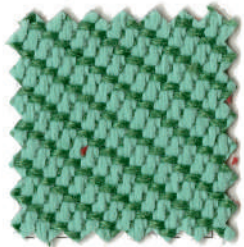
1909



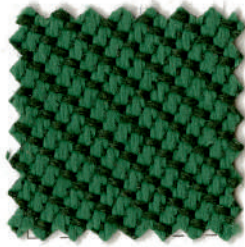
1912



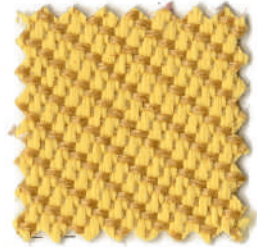
1944



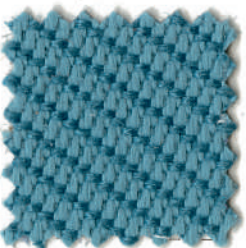
1918



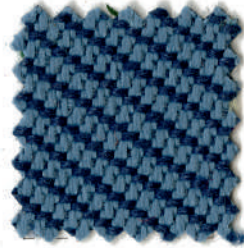
1920



1904



1922



1923





DESTINAZIONI D'USO/ APPLICATIONS
Rivestimenti per imbottiti, ufficio
e contract/ Workplace, education

RESISTENZA ALL'ABRASIONE
(CICLI MARTINDALE)/ ABRASION RESISTANCE
(MARTINDALE CYCLES)
UNI ISO 12947-2 ≥ 100.000

RESISTENZA ALLO SFREGAMENTO/ FASTNESS
TO RUBBING (EN ISO 105 - X12)
Umido/ Wet 4
Secco/ Dry 4

SOLIDITÀ ALLA LUCE/ LIGHT FASTNESS
(EN ISO 105 - B02) 5

MANUTENZIONE E PULIZIA/ MAINTENANCE
AND CLEANING
Aspirare regolarmente. Lavaggio professionale
a secco oppure pulizia con un panno umido/
Vacuum regularly. Professionally dry clean or
wipe clean with damp cloth

OCEANIC

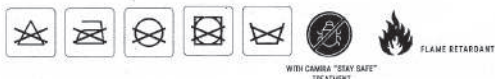
CARATTERISTICHE/ DESCRIPTION
100% poliestere riciclato di cui 50% in filo SEAQUAL
Altezza 140 cm
Peso 497 g/m²
Possono verificarsi differenze di colore

100% post-consumer recycled polyester,
including 50% SEAQUAL yarn
Width 140 cm
Weight 497 g/m²
Differences in color may occur

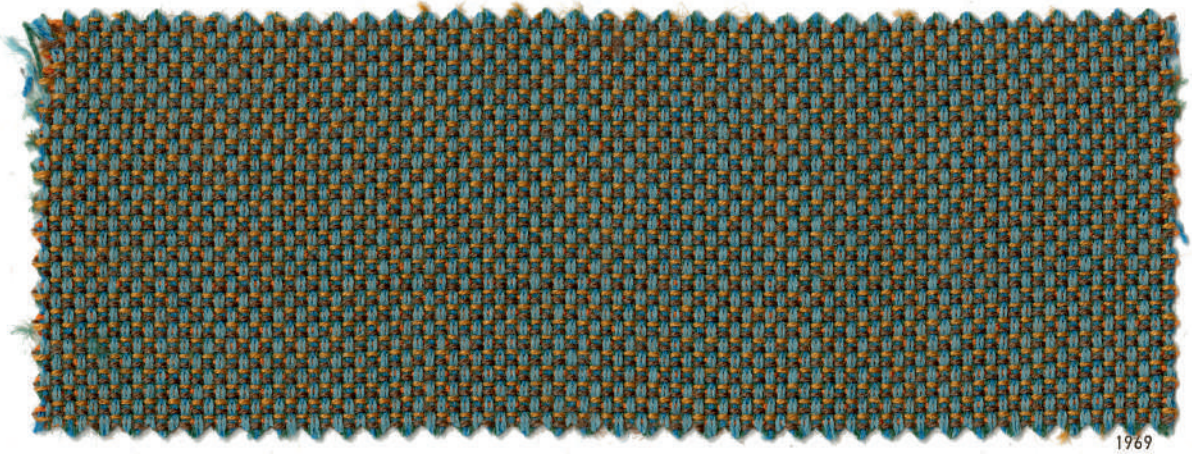
INFIAMMABILITÀ/ FLAMMABILITY
EN 1021 - 1
EN 1021 - 2
BS 7176 Low Hazard

10 ANNI DI GARANZIA/ 10 YEAR WARRANTY

**REVISIONE TESSUTI 05-2021/
FABRIC REVIEW 2021-05**



SEAQUAL



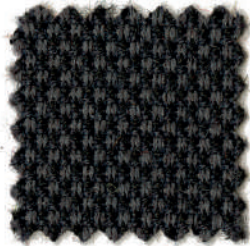
1969

 **LUXY.**

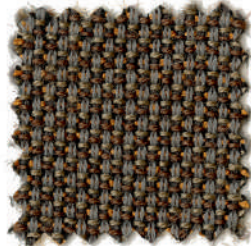
CATEGORIA K/
CATEGORY K

TESSUTO/
UPHOLSTERY

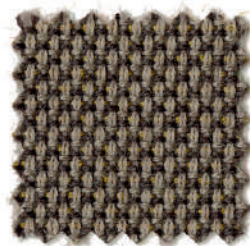
BREEZE FUSION
Gabriel



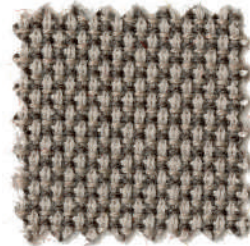
1979



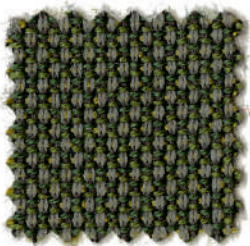
1966



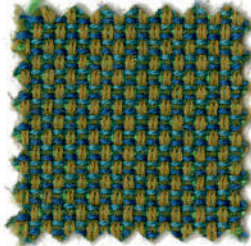
1977



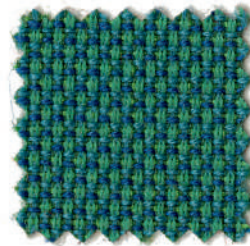
1976



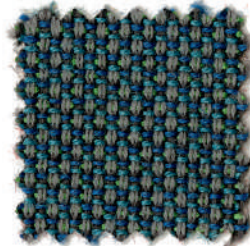
1970



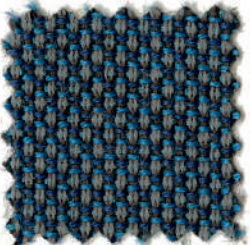
1968



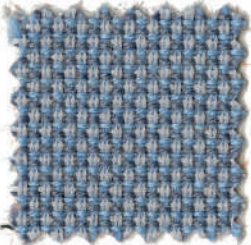
1997



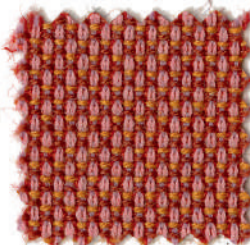
1973



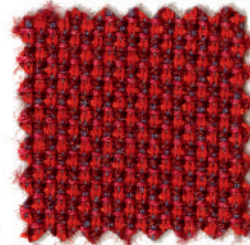
1974



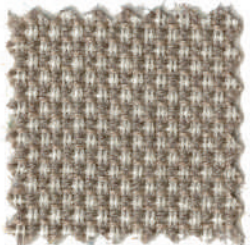
1994



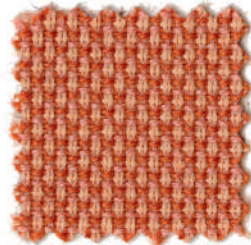
1962



1959



1952



1957





DESTINAZIONI D'USO/ APPLICATIONS

Rivestimenti per imbottiti, casa, ufficio
e contract/ Offices, contract use

RESISTENZA ALL'ABRASIONE (CICLI MARTINDALE)/ ABRASION RESISTANCE (MARTINDALE CYCLES)

EN ISO 12497-2	100.000
ASTM D4966-02	100.000

RESISTENZA ALLO SFREGAMENTO/ FASTNESS TO RUBBING (EN ISO 105 - X12)

Umido/ Wet	4/5
Secco/ Dry	4/5

RESISTENZA ALLA LUCE/ LIGHT FASTNESS (EN ISO 105 - B02)

5/7

PILLING (EN ISO 12945-2) 4/5

MANUTENZIONE E PULIZIA/ MAINTENANCE AND CLEANING

Lavaggio a secco P(S)/ Dry cleaning P(S)

BREEZE FUSION

CARATTERISTICHE/ DESCRIPTION

88% lana Nuova Zelanda
12% poliammide
Altezza 140 cm
Peso 421 g/m²
Possono verificarsi differenze di colore

88% New Zealand wool
12% polyamide
Width 140 cm
Weight 421 g/m²
Differences in color may occur

INFIAMMABILITÀ/ FLAMMABILITY

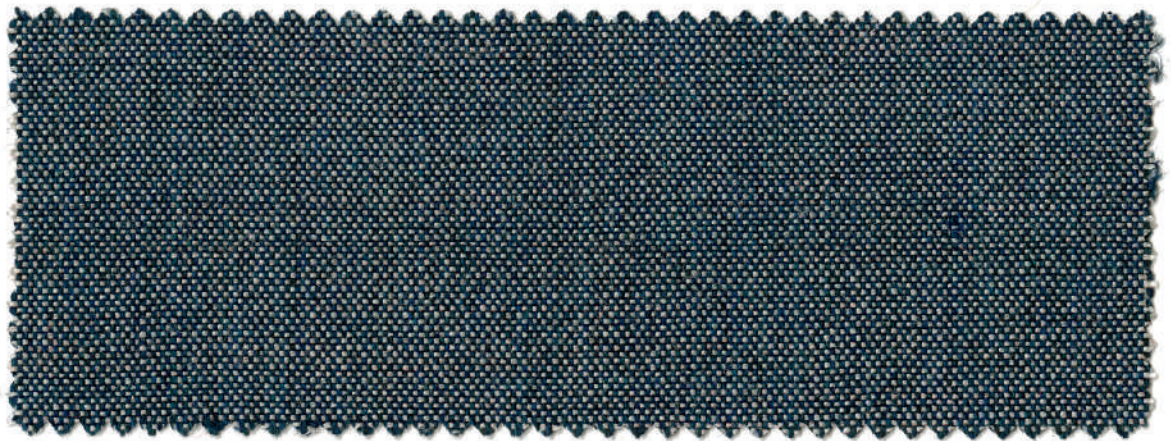
EN 1021-1
EN 1021-2
BS 5852 Part 1
BS 5852 CRIB 5
TB 117- 2013
IIM UNI 9175

Le performance ritardanti di fiamma dipendono dalla schiuma utilizzata. Non contiene sostanze chimiche ritardanti di fiamma/ Will also pass other flammability standards. Flame retardant performance is dependent upon the foam used. Contains no flame retardant chemicals

10 ANNI DI GARANZIA/ 10 YEAR WARRANTY

REVISIONE TESSUTI 05-2021/
FABRIC REVIEW 2021-05





2023

 **LUXY.**

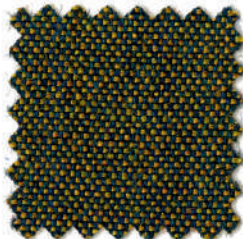
CATEGORIA K/
CATEGORY K

TESSUTO/
UPHOLSTERY

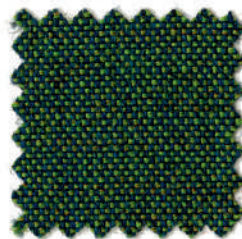
**REMIX 3
kvadrat**



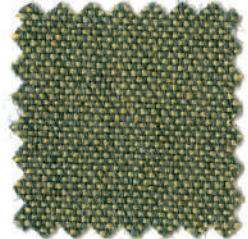
2040



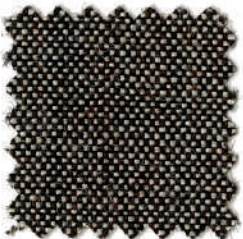
2021



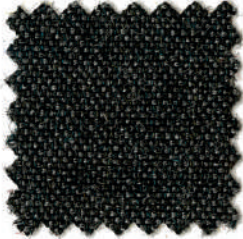
2020



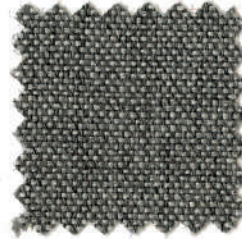
2018



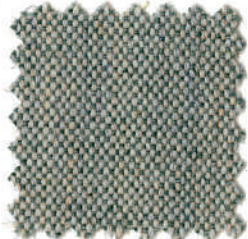
2038



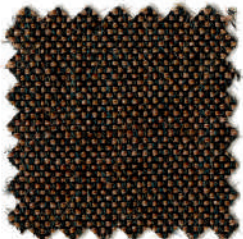
2027



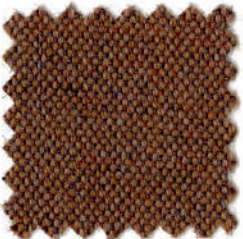
2026



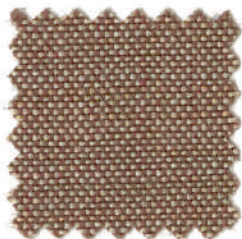
2025



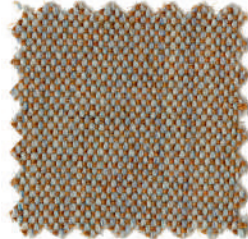
2017



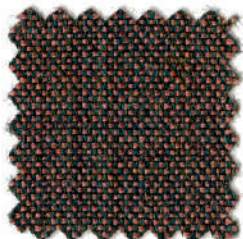
2016



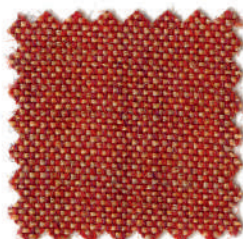
2033



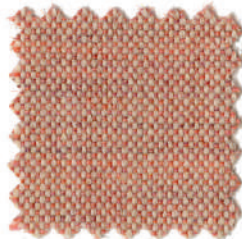
2003



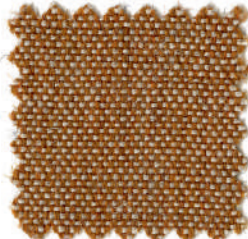
2030



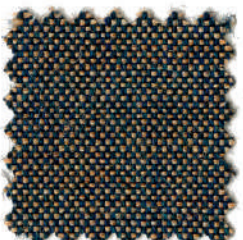
2009



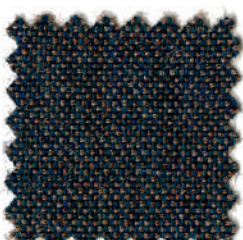
2012



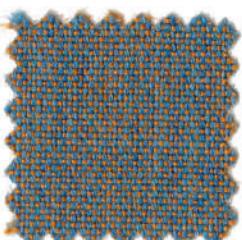
2031



2035



2046



2024





DESTINAZIONI D'USO/ APPLICATIONS
Rivestimenti per imbottiti, casa, ufficio
e contract. Alta resistenza all'abrasione/
Offices, hotels, institutions, domestic use.
Great durability

RESISTENZA ALL'ABRASIONE
(CICLI MARTINDALE)/ ABRASION RESISTANCE
(MARTINDALE CYCLES)
EN ISO 12947-2 **100.000**

RESISTENZA ALLO SFREGAMENTO/ FASTNESS
TO RUBBING (EN ISO 105 - X12)
Umido/ Wet **4/5**
Secco/ Dry **4/5**

RESISTENZA ALLA LUCE/ LIGHT FASTNESS
(EN ISO 105 - B02)
Xenotest (blue scale) **6**

PILLING METODO MARTINDALE/
PILLING MARTINDALE METHOD
ISO 12945-2 **4**

MANUTENZIONE E PULIZIA/ MAINTENANCE
AND CLEANING
Aspirare frequentemente, idealmente ogni setti-
mana. Rimuovere le macchie non appena si pre-
sentano, con acqua calda pulita o acqua frizzante/
Vacuum clean frequently, ideally every week. Remove
stains as soon as they occur, with clean warm water
or sparkling water

REMIX 3

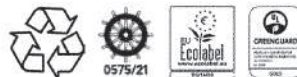
CARATTERISTICHE/ DESCRIPTION
90% lana vergine pettinata
10% nylon
Altezza 140 cm
Peso 307 g/m²
Possono verificarsi differenze di colore

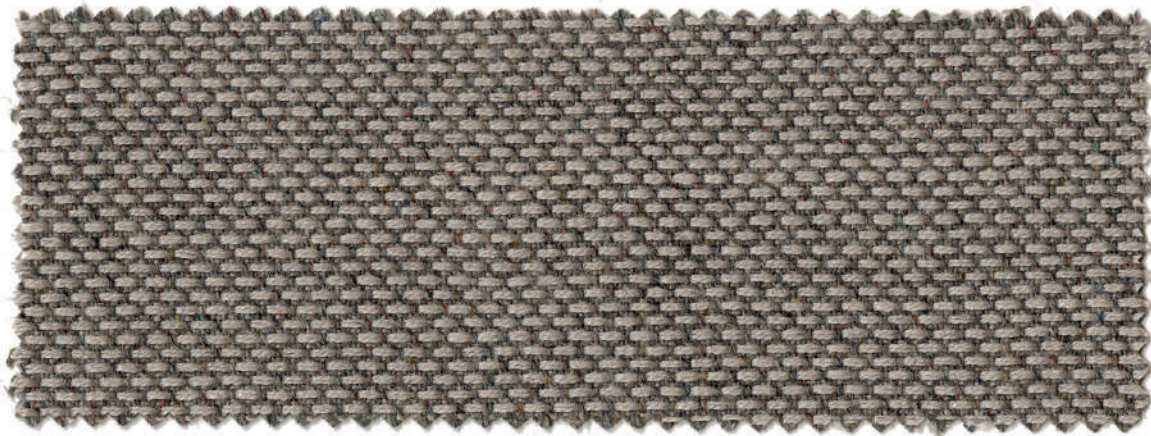
90% new wool
10% nylon
Width 140 cm
Weight 307 g/m²
Differences in color may occur

INFIAMMABILITÀ/ FLAMMABILITY
AS/NZS 1530.3
BS 5852 CRIB 5 WITH TREATMENT
BS 5852 IGNITION SOURCE 3
BS 5852 PART 1
IMO FTP CODE 2010 PART 7 WITH TREATMENT
IMO FTP CODE 2010 PART 8
NF D 60 013
NFPA 260
SN 198 898 5.3 WITH TREATMENT
11M UNI 9175
TB 117:2013
EN 1021-1
EN 1021-2
AS/NZS 3837 CLASS 2
ÖNORM B1/Q1
ASTM E84 CLASS A UNADHERED
ASTM E84 CLASS A ADHERED
GB 50222 B1 WITH TREATMENT (CHINESE)

10 ANNI DI GARANZIA/ 10 YEAR WARRANTY

REVISIONE TESSUTI 05-2021/
FABRIC REVIEW 2021-05





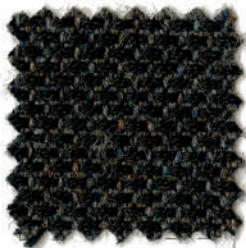
2075

 **LUXY.**

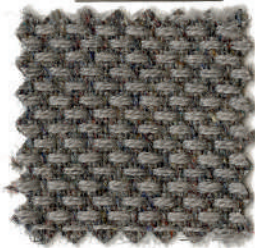
CATEGORIA K/
CATEGORY K

TESSUTO/
UPHOLSTERY

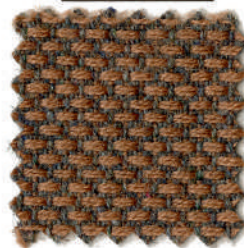
RE-WOOL
kvadrat



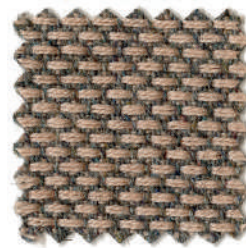
2099



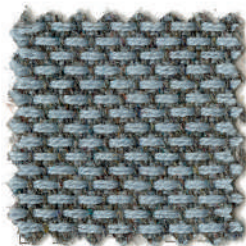
2077



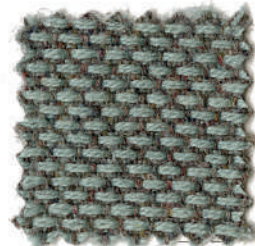
2066



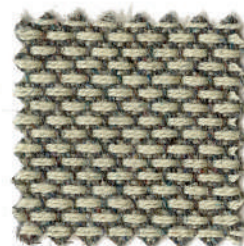
2081



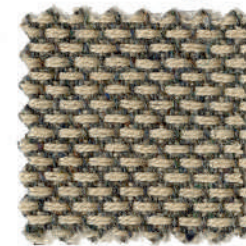
2072



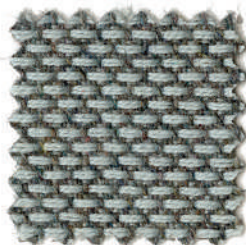
2097



2068



2083



2094





DESTINAZIONI D'USO/ APPLICATIONS

Uffici, alberghi, istituzioni, uso domestico.
Grande resistenza all'abrasione/ Institutions,
domestic use. Great durability

RESISTENZA ALL'ABRASIONE (CICLI MARTINDALE)/ ABRASION RESISTANCE (MARTINDALE CYCLES)

EN ISO 12947-2 100.000

RESISTENZA ALLO SFREGAMENTO/ FASTNESS TO RUBBING (EN ISO 105 - X12)

Umido/ Wet 4/5

Secco/ Dry 4/5

RESISTENZA ALLA LUCE/ LIGHT FASTNESS

EN ISO 105 - B02 5/7

PILLING

EN ISO 12945 4

MANUTENZIONE E PULIZIA/ MAINTENANCE AND CLEANING

Aspirare e lavare a secco/ Vacuum and dry cleaning

RE-WOOL

CARATTERISTICHE/ DESCRIPTION

45% Lana riciclata

45% Lana Vergine pettinata

10% nylon

Altezza 140 cm

Peso circa 386 g/m²

Possono verificarsi differenze di colore

45% recycled wool

45% new wool

10% nylon

Width 140 cm

Weight 386 g/m²

Differences in color may occur

INFIAMMABILITÀ/ FLAMMABILITY

11M UNI 9175

EN 1021 - 1

EN 1021 - 2

BS 5852 CRIB 5 Trattato ignifugo / With treatment

BS 5852 ignition source 3

BS 5852 Part 1

AS/NZS 1530.3

TB 117:2013

IMO FTP CODE 2010: Part 8

NF D 60 013

OENORM B1/Q1

ASSORBIMENTO ACUSTICO / ACOUSTIC ABSORPTION

ISO 354:2003

Class D (Flat) 0.50

Class C (Waved) 0.75

Flusso d'aria / Airflow

EN 29053 258 Pa s/m

10 ANNI DI GARANZIA/ 10 YEAR WARRANTY

REVISIONE TESSUTI 05-2021/

FABRIC REVIEW 2021-05





1402

 **LUXY.**

CATEGORIA D/
CATEGORY D

TESSUTO/
UPHOLSTERY

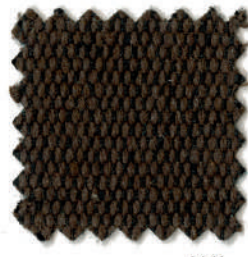
DISCO COEX



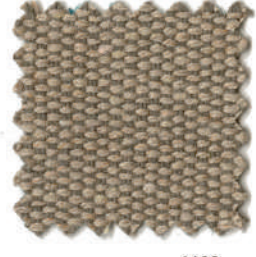

1438



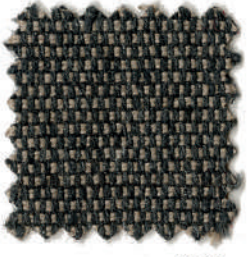
1428



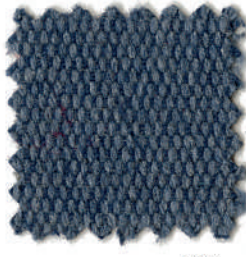
1441



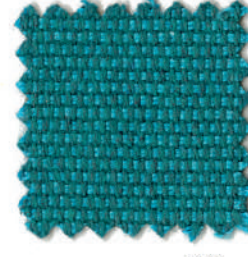
1403



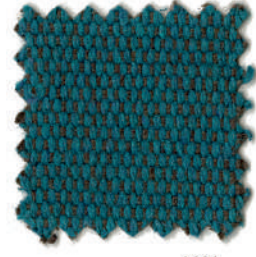
1443



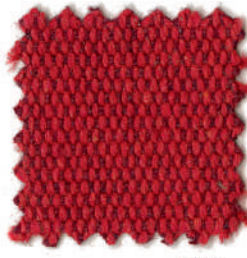
1424



1447



1421



1409





DESTINAZIONI D'USO/ APPLICATIONS

Rivestimenti per imbottiti, casa e contract/
Offices, hotels, institutions, domestic use

RESISTENZA ALL'ABRASIONE (CICLI)/ ABRASION RESISTANCE (CYCLES)

UNI EN ISO 12947-2 50.000

RESISTENZA ALLO SFREGAMENTO/ FASTNESS TO RUBBING (EN ISO 105 - X12)

Umido/ Wet 4
Secco/ Dry 5

RESISTENZA ALLA LUCE/ LIGHT FASTNESS EN ISO 105 - B02 4/5

MANUTENZIONE E PULIZIA/ MAINTENANCE AND CLEANING

Usare con regolarità aspirapolvere a beccuccio
liscio, senza spazzolare/ Hoover regularly and
don't brush

DISCO COEX

CARATTERISTICHE/ DESCRIPTION

70% cotone
20% acrilico
5% viscosa
5% lino
0% formaldeide
Altezza 150 cm
Peso 430 g/m²
Tinto a filo
Possono verificarsi differenze di colore

70% cotton
20% acrylic
5% viscose
5% linen
0% formaldehyde
Width 150 cm
Weight 430 g/m²
Yarn dyed
Colour differences may occur

INFIAMMIBILITÀ/ FLAMMABILITY

11M UNI 9175
EN 1021 - 1
EN 1021 - 2
BS 5852 CRIB 5
TB 117:2013

ASSORBIMENTO ACUSTICO/ ACOUSTIC ABSORPTION UNI EN ISO 354:2003

5 ANNI DI GARANZIA/ 5 YEAR WARRANTY

REVISIONE TESSUTI 05-2021/
FABRIC REVIEW 2021-05





1454

 **LUXY.**

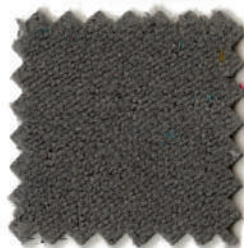
CATEGORIA D/
CATEGORY D

TESSUTO/
UPHOLSTERY

GORGEOUS



1499



1477



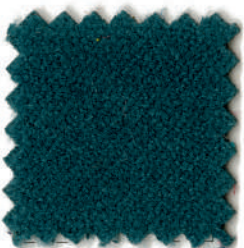
1475



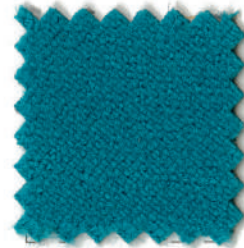
1452



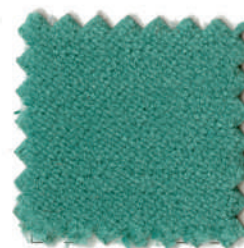
1490



1470



1497



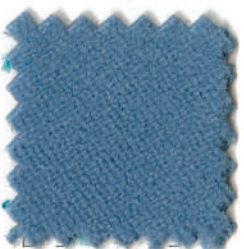
1487



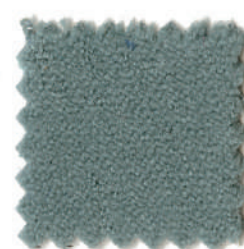
1485



1482



1472



1469



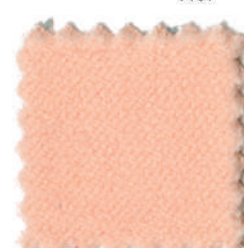
1461



1463



1459



1462



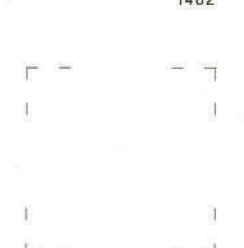
1467



1455



1496





DESTINAZIONI D'USO/ APPLICATIONS
Rivestimenti per imbottiti, casa,
ufficio e contract/ Offices, hotels, institutions,
domestic use

RESISTENZA ALL'ABRASIONE
(CICLI MARTINDALE)/ ABRASION RESISTANCE
(MARTINDALE CYCLES)
UNI EN ISO 12947-2 100.000

RESISTENZA ALLO SFREGAMENTO/ FASTNESS
TO RUBBING (EN ISO 105 - X12)
Umido/ Wet 4
Secco/ Dry 4

RESISTENZA ALLA LUCE/ LIGHT FASTNESS
(EN ISO 105 - B02) 5

PILLING
(EN ISO 12945-2) 5

RESISTENZA ALLA TRAZIONE/ TENSILE STRENGHT (N)

EN ISO 13934-1
Ordito/ Warp 400
Trama/ Weft 400

UNI EN ISO 13937-3
Ordito/ Warp 48
Trama/ Weft 32

MANUTENZIONE E PULIZIA/ MAINTENANCE
AND CLEANING
Usare con regolarità aspirapolvere a beccuccio
liscio, senza spazzolare/ Hoover regularly and
don't brush

GORGEOUS

CARATTERISTICHE/ DESCRIPTION
100% polisolfone (PES) Trevira CS
Altezza 140 cm
Peso 450 g/m²
Possono verificarsi differenze di colore

100% polysulfone (PES) Trevira CS
Width 140 cm
Weight 450 gr/m²
Differences in color may occur

INFIAMMABILITÀ/ FLAMMABILITY
11M UNI 9175
EN 1021 - 1
EN 1021 - 2
BS 5852 CRIB 5
IMO FTP CODE 2010
DIN 4102 B1
NF P 92 503-507 M1
UNI 9177 CLASSE 1

5 ANNI DI GARANZIA/ 5 YEARS WARRANTY

REVISIONE TESSUTI 05-2021/
FABRIC REVIEW 2021-05





1658

 **LUXY.**

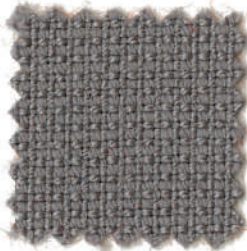
CATEGORIA D/
CATEGORY D

TESSUTO/
UPHOLSTERY

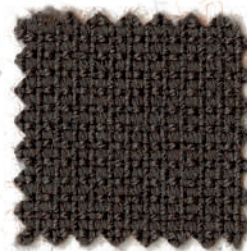
FAME
Gabriel



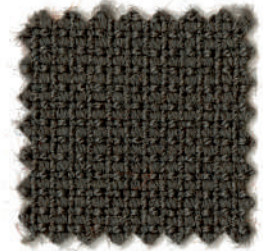
1699



1676



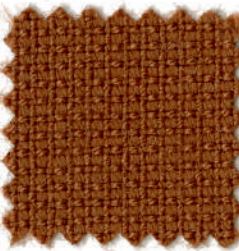
1677



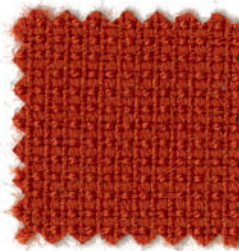
1684



1667



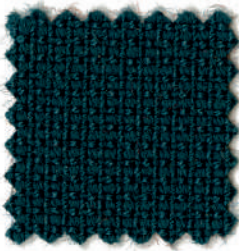
1681



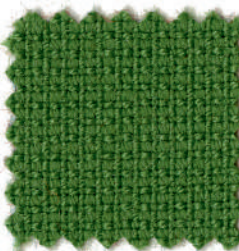
1680



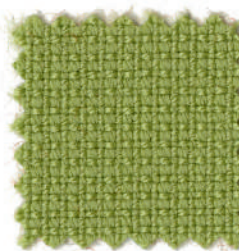
1675



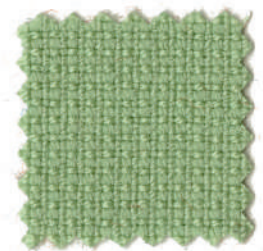
1670



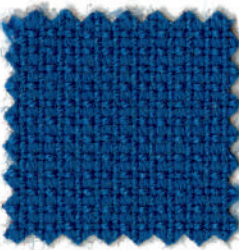
1687



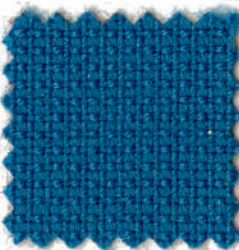
1669



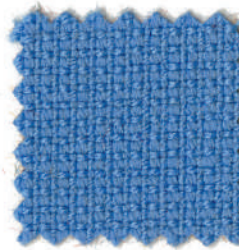
1668



1673



1697



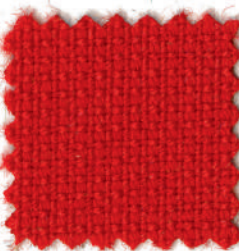
1672



1694



1661



1659



1657





DESTINAZIONI D'USO/ APPLICATIONS
Rivestimenti per imbottiti, ufficio e contract/
Offices, contract use

RESISTENZA ALL'ABRASIONE
(CICLI MARTINDALE)/ ABRASION RESISTANCE
(MARTINDALE CYCLES)

EN ISO 12947-2	200.000
ASTM D4157-07	140.000

RESISTENZA ALLO SFREGAMENTO/ FASTNESS
TO RUBBING (EN ISO 105 - X12)

Umido/ Wet	4/5
Secco/ Dry	4/5

RESISTENZA ALLA LUCE/ LIGHT FASTNESS
(EN ISO 105 - B02) 5/7

PILLING (EN ISO 12945-2) 4

MANUTENZIONE E PULIZIA/ MAINTENANCE
AND CLEANING
Lavaggio a secco P(S)/ Dry cleaning P(S)

FAME

CARATTERISTICHE/ DESCRIPTION
95% lana Nuova Zelanda
5% poliammide
Altezza 140 cm
Peso 450 g/m²
Possono verificarsi differenze di colore

95% New Zeland wool.
5% poliammyde
Width 140 cm
Weight 450 g/m²
Differences in color may occur

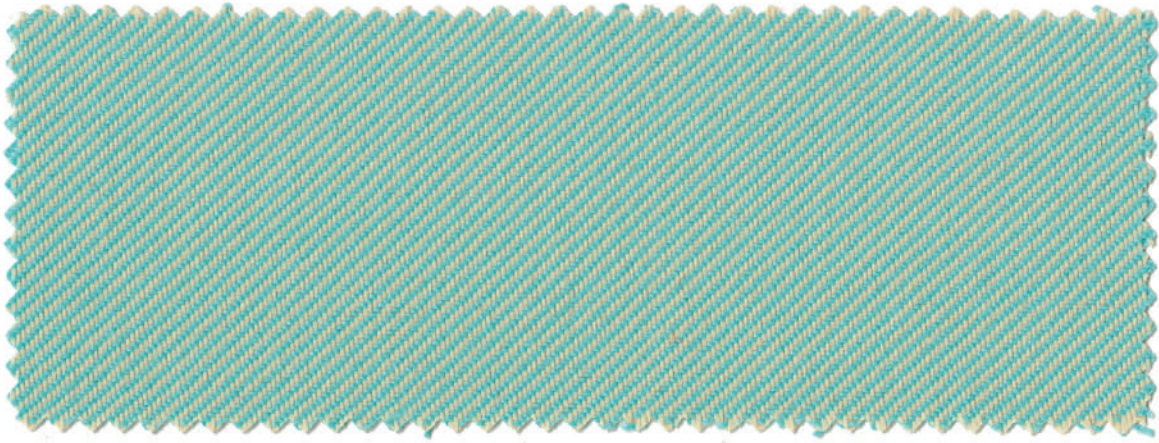
INFIAMMABILITÀ/ FLAMMABILITY
11M UNI 9175
EN 1021 - 1
EN 1021 - 2
BS 5852 CRIB 5
TB 117:2013
AM18-NF D 60-013-(only for fabric)
BS 5852 Part 1 0,1 Cigarette and match
OENORM A3800-B1-B3825-Q1 UK
IMO MSC 307 (88) Annex 1 part 8
MED Certificate IMO
MED Certificate IMO UK
IMO MSC
BS 476 Part 7 class 1

ASSORBIMENTO ACUSTICO / ACOUSTIC ABSORPTION
UNI EN ISO 354:2003
ISO 11654
Resistenza al flusso d'aria / Air flow resistance
EN 29053
ISO 9053-1

10 ANNI DI GARANZIA/ 10 YEARS WARRANTY

**REVISIONE TESSUTI 05-2021/
FABRIC REVIEW 2021-05**





1718

 **LUXY.**

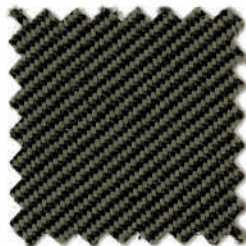
CATEGORIA D/
CATEGORY D

TESSUTO/
UPHOLSTERY

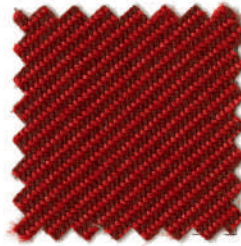
RELATE
kvadrat



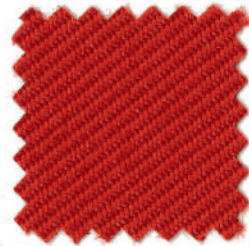
1749



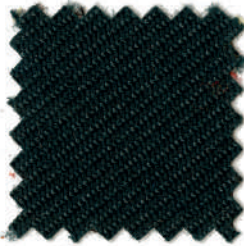
1729



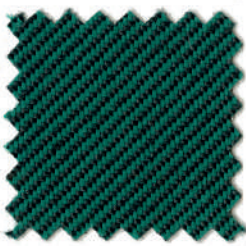
1710



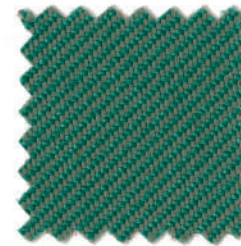
1709



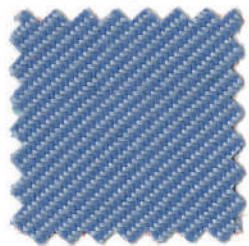
1740



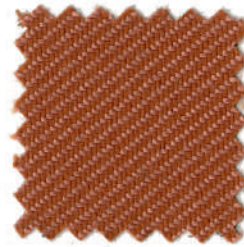
1720



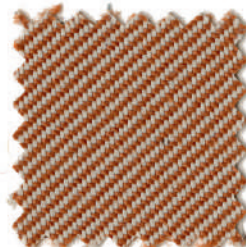
1747



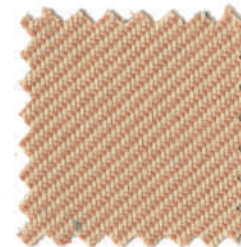
1722



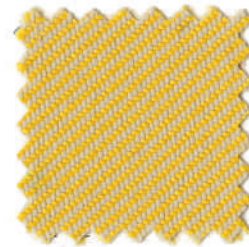
1716



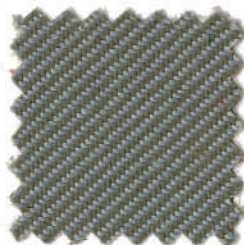
1731



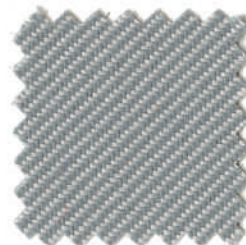
1703



1704



1727



1725





DESTINAZIONI D'USO/ APPLICATIONS
Rivestimenti per imbottiti, casa, ufficio e contract. Alta resistenza all'abrasione/ Offices, hotels, institutions, domestic use.

RESISTENZA ALL'ABRASIONE (CICLI MARTINDALE)/ ABRASION RESISTANCE (MARTINDALE CYCLES)
EN ISO 12947-2 **80.000**

RESISTENZA ALLO SFREGAMENTO/ FASTNESS TO RUBBING (EN ISO 105 - X12)
Umido/ Wet **4/5**
Secco/ Dry **4/5**

RESISTENZA ALLA LUCE/ LIGHT FASTNESS (EN ISO 105 - B02) **5/7**

PILLING (EN ISO 12945-2) **4/5**

ASSORBIMENTO ACUSTICO / ACOUSTIC ABSORPTION UNI EN ISO 354:2003
Class D (Flat) **0.45**
Class C (Waved) **0.70**
Flusso d'aria / Airflow
EN 29053 **2430 Pa s/m**

MANUTENZIONE E PULIZIA/ MAINTENANCE AND CLEANING

Aspirare frequentemente, idealmente ogni settimana. Rimuovere subito le macchie quando si verificano con acqua calda o acqua minerale. Lavabile anche a 60° - 80°C a mezzo carico di lavaggio. Asciugatura a goccia/ Vacuum frequently, ideally every week. Remove stains asap they occur, with clean warm water or sparkling water. Also washable at 60-80°C, half wash load. Drip drying.



RELATE

CARATTERISTICHE/ DESCRIPTION

100% Trevira CS
Altezza 140 cm
Peso 321 g/m²
Tinto in filo
Possono verificarsi differenze di colore

100% Trevira CS
Width 140 cm
Weight 321 g/m²
Yarn dyed
Differences in color may occur

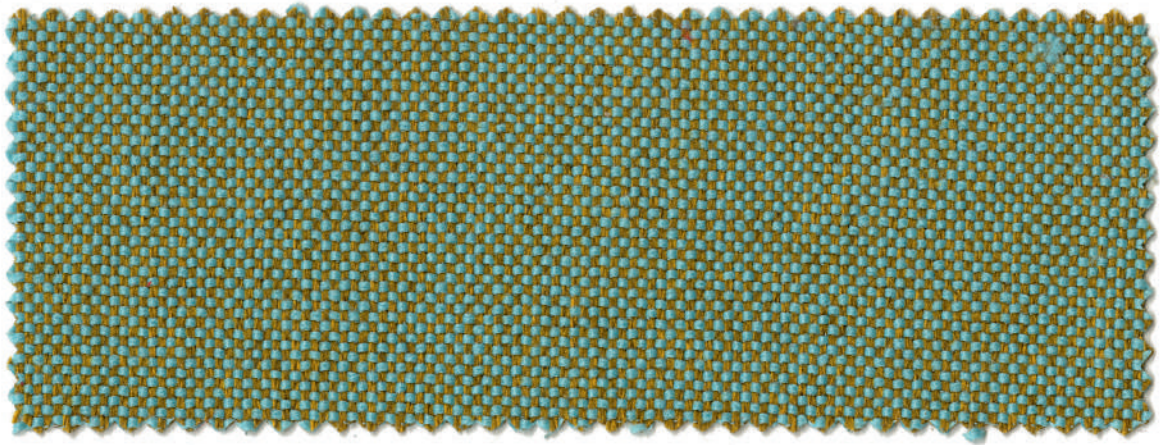
INFIAMMABILITÀ/ FLAMMABILITY

AS/NZS 3837 Class 2
ASTM E84 Class A unadhered
ASTM E84 Class B adhered
BS 5852 CRIB 5
BS 5852 Part 1 con trattamento ritardante/
with treatment
DIN 4102 B1
EN 1021 - 1
EN 1021 - 2
IMO FTP CODE 2010: Part 8
NF D 60 013
NF P 92 507 M1
NFPA 701
SN 198 898 5.2
UNI 9177 Classe 1
TB 117:2013
OENORM B1/Q1

10 ANNI DI GARANZIA/ 10 YEARS WARRANTY

**REVISIONE TESSUTI 05-2021/
FABRIC REVIEW 2021-05**





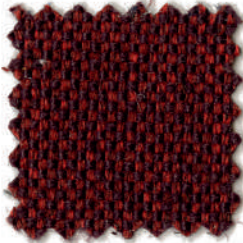
1847

 **LUXY.**

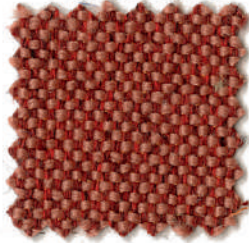
CATEGORIA D/
CATEGORY D

TESSUTO/
UPHOLSTERY

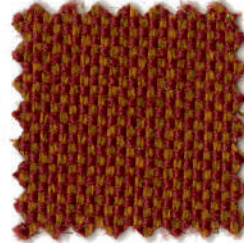
ACTON
VESCOM



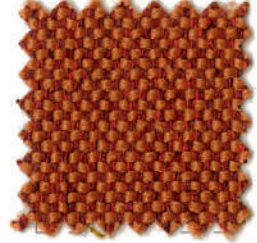
1811



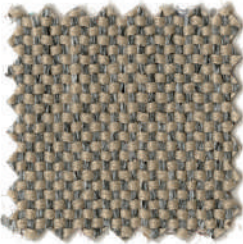
1816



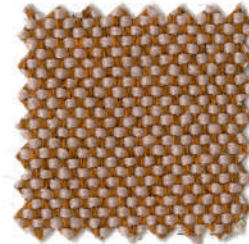
1809



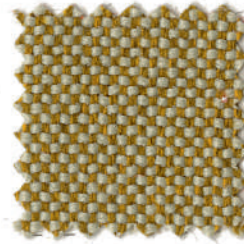
1807



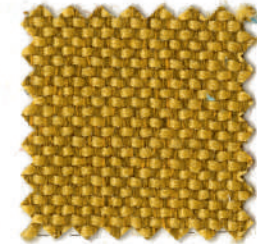
1803



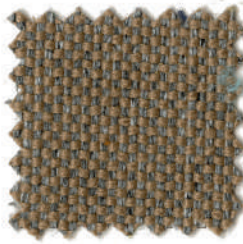
1812



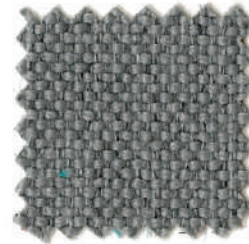
1805



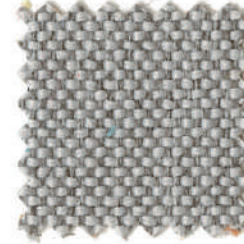
1804



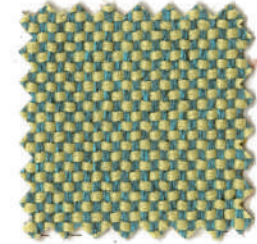
1831



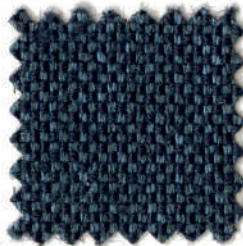
1826



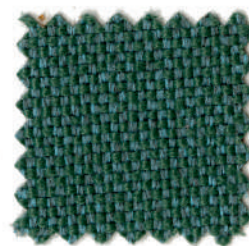
1825



1818



1832



1820





DESTINAZIONI D'USO/ APPLICATIONS

Rivestimenti per imbottiti, casa, ufficio
e contract/ Offices, hotels, institutions,
domestic use

RESISTENZA ALL'ABRASIONE

(CICLI MARTINDALE)/ ABRASION RESISTANCE
(MARTINDALE CYCLES)

EN ISO 12947-2	90.000
ASTM D4157	100.000

RESISTENZA ALLO SFREGAMENTO/ FASTNESS TO RUBBING

EN ISO 105 - X12

Umido/ Wet 4/5

Secco/ Dry 4/5

AATCC 8

Umido/ Wet 5

Secco/ Dry 5

RESISTENZA ALLA LUCE/ LIGHT FASTNESS

EN ISO 105 - B02 6

AATCC 16.3: 40 Hours 4

PILLING

EN ISO 12945-2 4

ASTM D3511 5

MANUTENZIONE E PULIZIA/ MAINTENANCE AND CLEANING

Usare con regolarità aspirapolvere a beccuccio liscio,
senza spazzolare/ Hoover regularly and don't brush

Restringimento / Shrinkage (%)

Ordito / Warp -2.7

Trama / Weft -0.6

ACTON

CARATTERISTICHE/ DESCRIPTION

100% poliestere ignifugo

Altezza 141 cm

Peso 429 g/m²

Possono verificarsi differenze di colore

100% flame retardant polyester

Width 141 cm

Weight 429 g/m²

Differences in color may occur

INFIAMMABILITÀ/ FLAMMABILITY

11M UNI 9175

EN 1021 - 1

EN 1021 - 2

BS 5852 CRIB 5

TB 117:2013

IMO FTP 2010 part 8

DIN 4102 B1

NFPA 260, Class 1

RESISTENZA ALLA TRAZIONE/ BREAKING STRENGTH

EN ISO 13937 (N)

Ordito/ Warp 1380

Trama/ Weft 1790

ASTM D5034 (N)

Ordito/ Warp 263 lbs

Trama/ Weft 345 lbs

5 ANNI DI GARANZIA/ 5 YEAR WARRANTY

REVISIONE TESSUTI 05-2021/

FABRIC REVIEW 2021-05



USCG -
EU MRA
0038



608

 **LUXY.**

CATEGORIA C/
CATEGORY C

TESSUTO/
UPHOLSTERY

SECRET



649



604



605



625



617



606



610



603



619



621



633



618



612



607



609



611



601



602



632





SECRET

DESTINAZIONI D'USO/ APPLICATIONS

Rivestimenti per imbottiti, casa, ufficio,
contract e navale/ Offices, hotels, institutions,
domestic and naval use

RESISTENZA ALL'ABRASIONE (CICLI MARTINDALE)/ ABRASION RESISTANCE (MARTINDALE CYCLES)

ISO 5470-2 **60.000**

RESISTENZA ALLO SFREGAMENTO/ FASTNESS TO RUBBING (EN ISO 105 - X12)

Umido/ Wet **5**
Secco/ Dry **5**

RESISTENZA ALLA LUCE/ LIGHT FASTNESS (EN ISO 105 - B02)

6/7

RESISTENZA ALLA TRAZIONE/ TENSILE STRENGTH(%) UNI EN ISO 1421

Longitudinale/ Longitudinal **600**
Trasversale/ Trasversal **240**

ALLUNGAMENTO A ROTTURA/ ELONGATION STRENGTH (%)

UNI EN ISO 1421
Longitudinale/ Longitudinal **70**
Trasversale/ Trasversal **110**

MANUTENZIONE E PULIZIA/ MAINTENANCE AND CLEANING

Usare con regolarità aspirapolvere a beccuccio
liscio, senza spazzolare/ Hoover regularly with
a smooth nozzle and don't brush

CARATTERISTICHE/ DESCRIPTION

76% polivinilcloruro (PVC)
2% poliuretano (PU)
22% polisolfone (PES)
Altezza 140 cm
Peso 540 g/m²
Possono verificarsi differenze di colore
Addizionato con agente antibatterico MICROPEL

76% polyvinylchloride (PVC)
2% polyurethane (PU)
22% polysulfone (PES)
Width 140 cm
Weight 540 g/m²
Differences in color may occur
Added with MICROPEL antibacterial agent

RESISTENZA ALLE FLESSIONI (Cicli) / BENDING STRENGTH (Cycles)

UNI 4818-13 **100.000**

RESISTENZA ALLA LACERAZIONE/ ELONGATION STRENGTH (%)

UNI EN ISO 4674
Longitudinale/ Longitudinal **30**
Trasversale/ Trasversal **30**

INFIAMMIBILITÀ/ FLAMMABILITY

11M UNI 9175

EN 1021 - 1
EN 1021 - 2
BS 5852 - 1
BS 5852 - 2
TB 117:2013

5 ANNI DI GARANZIA/ 5 YEARS WARRANTY

REVISIONE TESSUTI 05-2021/
FABRIC REVIEW 2021-05





1203

 **LUXY.**

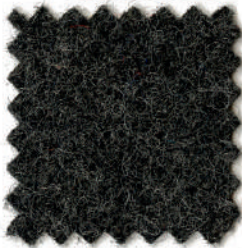
CATEGORIA C/
CATEGORY C

TESSUTO/
UPHOLSTERY

 **FENICE**
Pugi.rg



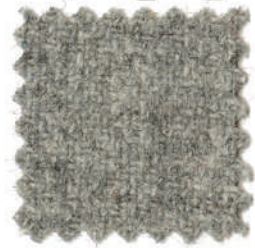
1249



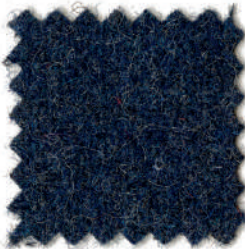
1238



1229



1228



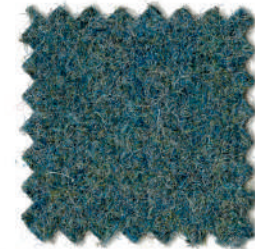
1223



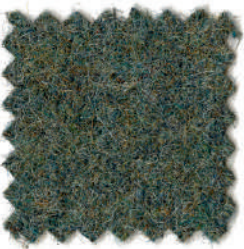
1235



1224



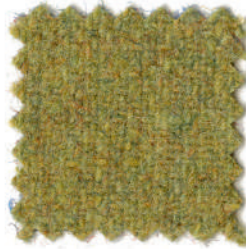
1221



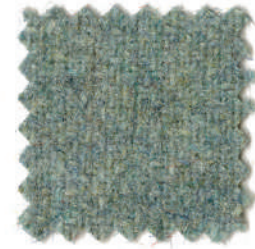
1247



1219



1218



1244



1241



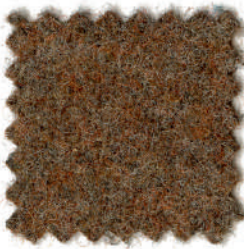
1230



1209



1207



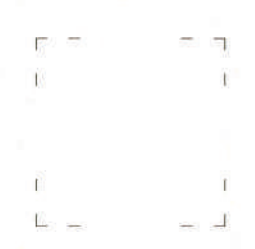
1243



1242



1204





DESTINAZIONI D'USO/ APPLICATIONS
Rivestimenti per imbottiti, casa, ufficio e contract/
Offices, hotels, institutions, domestic use

RESISTENZA ALL'ABRASIONE
(CICLI MARTINDALE)/ ABRASION RESISTANCE
(MARTINDALE CYCLES)
UNI EN ISO 12947-2 100.000

RESISTENZA ALLO SFREGAMENTO/ FASTNESS
TO RUBBING (EN ISO 105 - X12)
Umido/ Wet 4/5
Secco/ Dry 4/5

RESISTENZA ALLA LUCE/ LIGHT FASTNESS
(EN ISO 105 - B02)
Xenotest (blue scale) 6

PILLING METODO MARTINDALE/
PILLING MARTINDALE METHOD
ISO 12945-2 4

MANUTENZIONE E PULIZIA/ MAINTENANCE
AND CLEANING
Usare con regolarità aspirapolvere a beccuccio
liscio, senza spazzolare/ Use vacuum cleaner
regularly with a smooth nozzle, without brushing

FENICE

CARATTERISTICHE/ DESCRIPTION
75% Lana / 25 % Poliammide (PA)
Altezza 140 cm
Peso 335 g/m²
Possono verificarsi differenze di colore

75% Wool / 25% polyamide (PA)
Height 140 cm
Weight 335 g/m²
Differences in color may occur

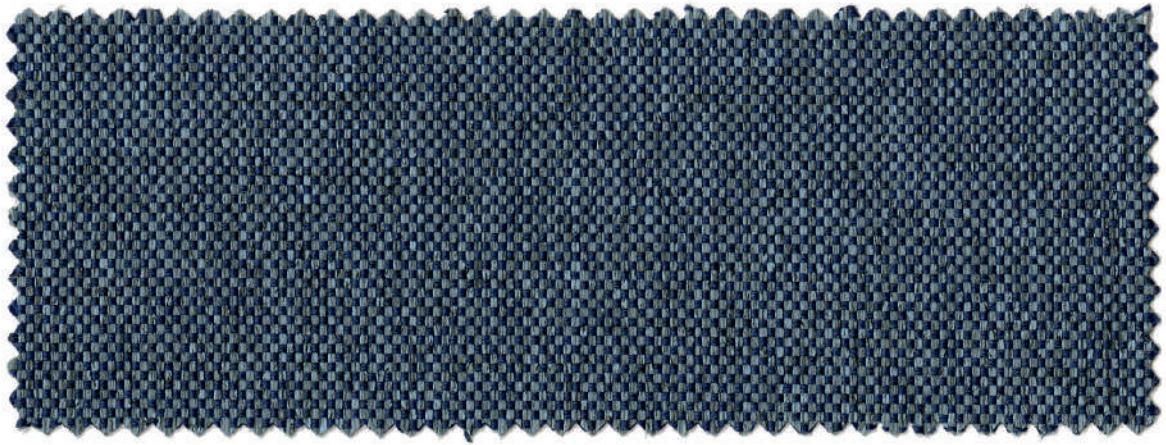
ASSORBIMENTO ACUSTICO / ACOUSTIC ABSORPTION
UNI EN ISO 354:2003
UNI EN ISO 10534-2

INFIAMMABILITÀ/ FLAMMABILITY
IIM UNI 9175 Con schiuma standard ignifuga con
densità 25 Kg/m³/ With standard flame retar-
dant foam with density 25 Kg/m³
BS 5852 CRIB 5
EN 1021 -1 con schiuma standard 20/22 kg/m³ /
with standard foam 20/22 kg/m³
EN 1021 -2 con schiuma standard 20/22 kg/m³ /
with standard foam 20/22 kg/m³
TB 117:2013

5 ANNI DI GARANZIA/ 5 YEARS WARRANTY

REVISIONE TESSUTI 05-2021/
FABRIC REVIEW 2021-05





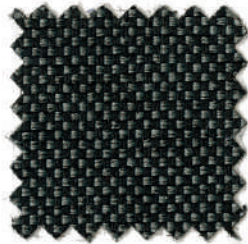
1574

 **LUXY.**

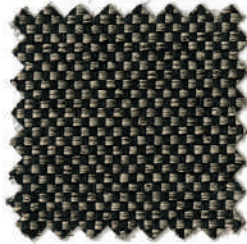
CATEGORIA C/
CATEGORY C

TESSUTO/
UPHOLSTERY

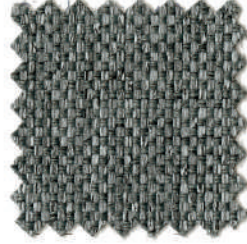
RIVET
camira



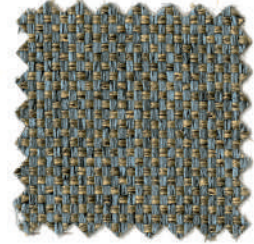
1599



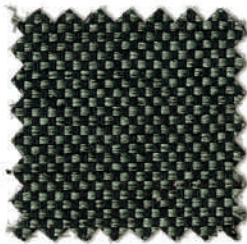
1579



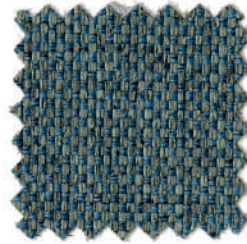
1584



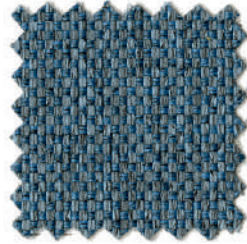
1575



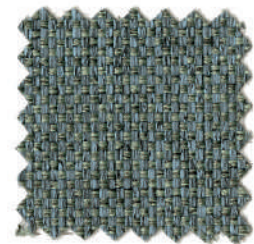
1578



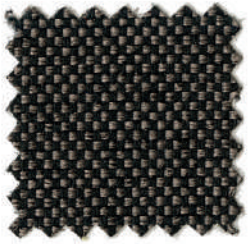
1597



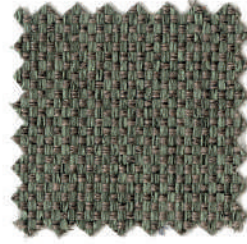
1573



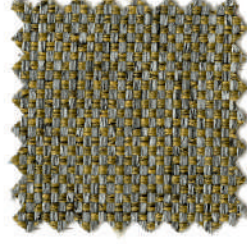
1572



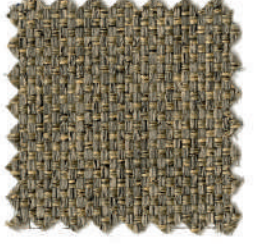
1588



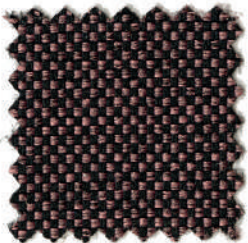
1593



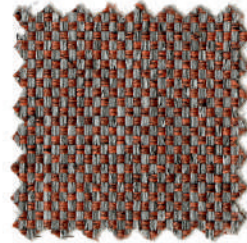
1569



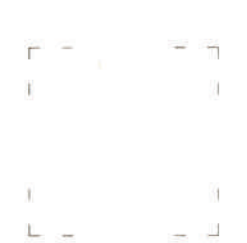
1554



1595



1562





DESTINAZIONI D'USO/ APPLICATIONS

Rivestimenti per imbottiti, ufficio, e contract/
Offices, institutions, contract use

RESISTENZA ALL'ABRASIONE

(CICLI MARTINDALE)/ ABRASION RESISTANCE
(MARTINDALE CYCLES)

UNI EN ISO 12947-2 \geq 80.000

RESISTENZA ALLO SFREGAMENTO/ FASTNESS TO RUBBING (EN ISO 105 - X12)

Umido/ Wet 4

Secco/ Dry 4

RESISTENZA ALLA LUCE/ LIGHT FASTNESS

(EN ISO 105 - B02) 6

MANUTENZIONE E PULIZIA/ MAINTENANCE AND CLEANING

Lavabile a 60°C. Aspirare regolarmente.

Pulire con un panno umido o un detergente
specifico per tessuti da rivestimento/ Vacuum
regularly. Wipe with a damp cloth using soap
and water or use proprietary upholstery shampoo.
For deeper cleaning use steam, bleach, alcohol or
professionally dry clean. Can be washed at 60°C

RIVET

CARATTERISTICHE/ DESCRIPTION

100% poliestere riciclato REPREVE

Altezza 140 cm

Peso 280 g/m²

Possono verificarsi differenze di colore

100% REPREVE recycled polyester

Width 140 cm

Weight 280 g/m²

Differences in color may occur

INFIAMMABILITÀ/ FLAMMABILITY

11M UNI 9175

EN 1021 -1

EN 1021 -2

BS7176 Low Hazard

10 ANNI DI GARANZIA/ 10 YEARS WARRANTY

REVISIONE TESSUTI 05-2021/

FABRIC REVIEW 2021-05



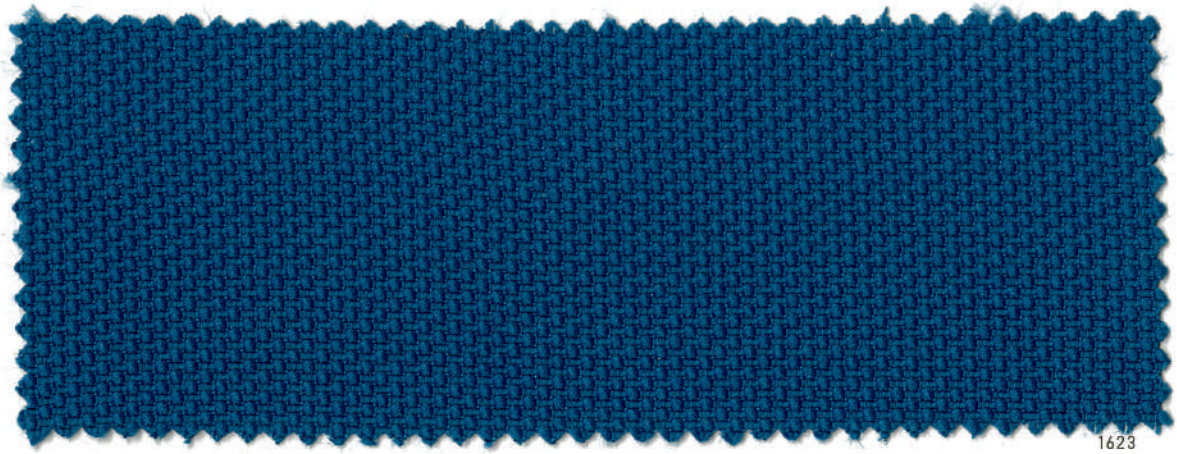
WITH CAMIRA "STAY SAFE"
TREATMENT



FLAME RETARDANT



Bleach
cleanable



1623

 **LUXY.**

CATEGORIA C/
CATEGORY C

TESSUTO/
UPHOLSTERY

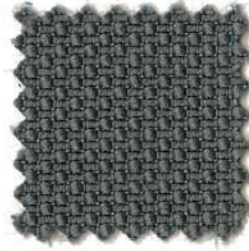
**FELICITY
Gabriel**



1649



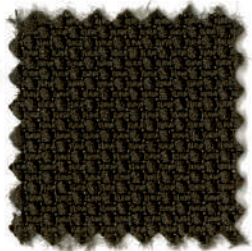
1627



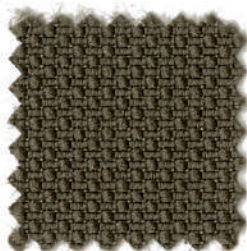
1634



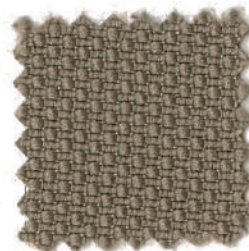
1626



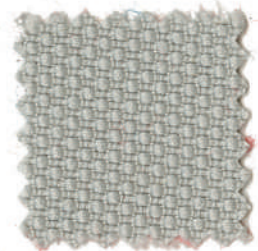
1629



1643



1642



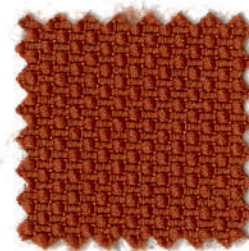
1644



1601



1631



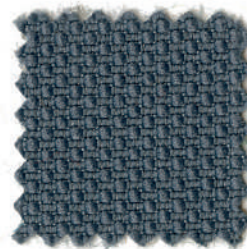
1616



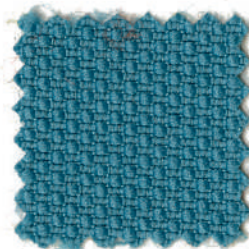
1609



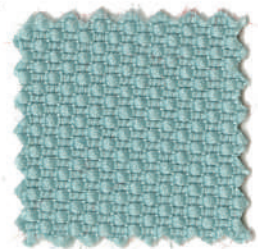
1635



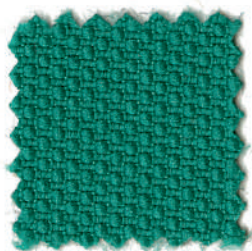
1625



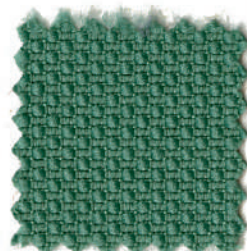
1624



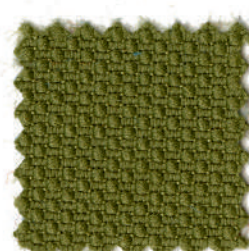
1622



1647



1637



1619





DESTINAZIONI D'USO/ APPLICATIONS
Rivestimenti per imbottiti, ufficio
e contract/ Offices, contract use

**RESISTENZA ALL'ABRASIONE
(CICLI MARTINDALE)/ ABRASION RESISTANCE
(MARTINDALE CYCLES)**
EN ISO 12947-2 90.000
ASTM D4157-07 100.000

**RESISTENZA ALLO SFREGAMENTO/ FASTNESS
TO RUBBING (EN ISO 105 - X12)**
Umido/ Wet 4/5
Secco/ Dry 4/5

**RESISTENZA ALLA LUCE/ LIGHT FASTNESS
(EN ISO 105 - B02)**
Xenotest (blue scale) 5/7

PILLING
EN ISO 12945-2 5

**MANUTENZIONE E PULIZIA/ MAINTENANCE
AND CLEANING**
Lavaggio e lavaggio a secco P (W). Felicity è
realizzata in poliestere che è un materiale
adatto ad ambienti con particolari esigenze di
pulizia/ Wash or dry cleaning P (W). Felicity is
made of polyester which is a material suited
for environments with special requirements
for cleaning

A 40°C ritiro max 1,5% / 40°C shrinkage max 1,5%



A 60°C ritiro max 2,5% / 60°C shrinkage max 2,5%



FELICITY

CARATTERISTICHE/ DESCRIPTION
100% poliestere riciclato post-consumo
Altezza 140 cm
Peso 307 g/m²
Possono verificarsi differenze di colore

100% post-consumer recycled polyester
Width 140 cm
Weight 307 g/m²
Differences in color may occur

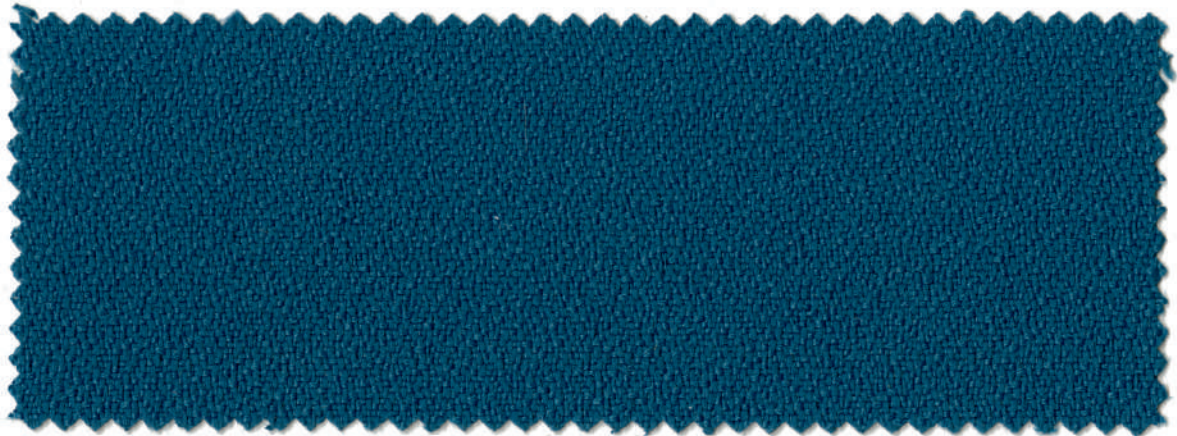
INFIAMMABILITÀ/ FLAMMABILITY
EN 1021 - 1
EN 1021 - 2
TB 117:2013

ASSORBIMENTO ACUSTICO / ACOUSTIC ABSORPTION
Flusso d'aria/ Air Flow
EN 29053
ISO 9053-1

10 ANNI DI GARANZIA/ 10 YEARS WARRANTY

**REVISIONE TESSUTI 05-2021/
FABRIC REVIEW 2021-05**





347

 **LUXY.**

CATEGORIA B/
CATEGORY B

TESSUTO/
UPHOLSTERY

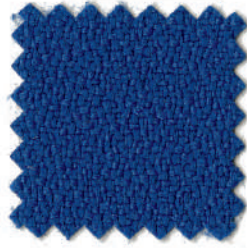
MIRAGE
 **Pugi.rg**



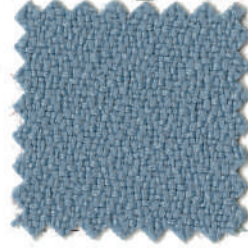
349



346



332



334



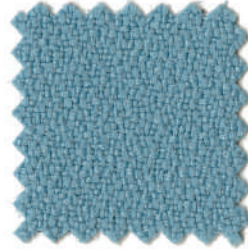
329



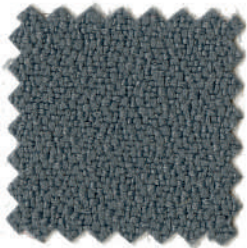
335



323



331



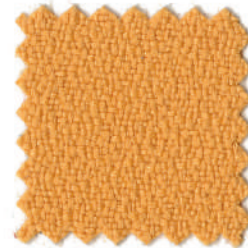
326



305



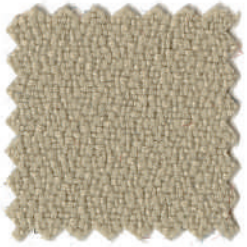
316



304



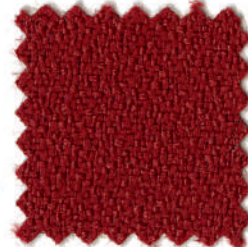
342



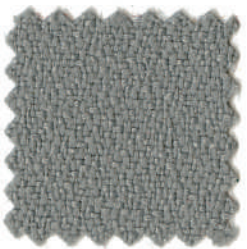
303



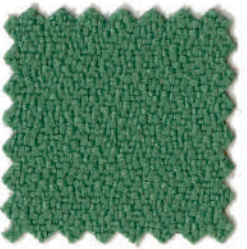
309



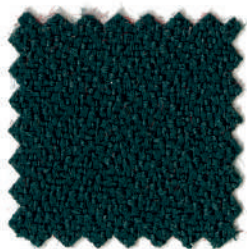
310



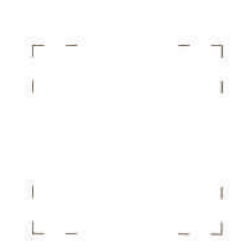
325



321



320





DESTINAZIONI D'USO/ APPLICATIONS

Rivestimenti per imbottiti, casa, ufficio e contract/ Offices, hotels, institutions, domestic use

RESISTENZA ALL'ABRASIONE

(CICLI MARTINDALE)/ ABRASION RESISTANCE (MARTINDALE CYCLES)

UNI EN ISO 12947-2 100.000

RESISTENZA ALLO SFREGAMENTO/ FASTNESS TO RUBBING (EN ISO 105 - X12)

Umido/ Wet 4/5

Secco/ Dry 4/5

RESISTENZA ALLA LUCE/ LIGHT FASTNESS (EN ISO 105 - B02)

Xenotest (blue scale) 6

PILLING METODO MARTINDALE/

PILLING MARTINDALE METHOD

ISO 12945-2 4

ASSORBIMENTO ACUSTICO / ACOUSTIC ABSORPTION

UNI EN ISO 354:2003

ISO 9053-2

MANUTENZIONE E PULIZIA/ MAINTENANCE AND CLEANING

Usare con regolarità aspirapolvere a beccuccio liscio, senza spazzolare. Strofinare leggermente con panno umido/ Use vacuum cleaner regularly and don't brush. Wipe clean with a damp cloth

MIRAGE

CARATTERISTICHE/ DESCRIPTION

100% poliestere FR (Tr Cs)

Altezza 140 cm

Peso 330 g/m²

Possono verificarsi differenze di colore

100% polyester FR (Tr Cs)

Width 140 cm

Weight 330 g/m²

Differences in color may occur

INFIAMMABILITÀ/ FLAMMABILITY

11M UNI 9175

Classe 1 Sipari, Drappeggi, Tendaggi

EN ISO 6940/6941

EN 1021 -1

EN 1021 -2

BS 5852 CRIB 5 con schiuma CM 35 kg/m³/ using a CM foam 35 kg/m³

B1 DIN 4102

EN 13773 Burning behaviour: Class 1

EN 13501 - 1 esp 1, 2: B - s1, d0

TB 117:2013

Fire protection classification: 5.3

FAR.25853 classification: yes

M1 + NF D 60 - 013:2006 AM18

B1 - OENORM 3800 PART 1 + OENORM B3825

AZIMUT

MED/3.19 MED 3.21: Draperies, Curtains

and Bedding Comp.

MED Annex A.1 item: A.1/3.20 Upholstered

Furniture

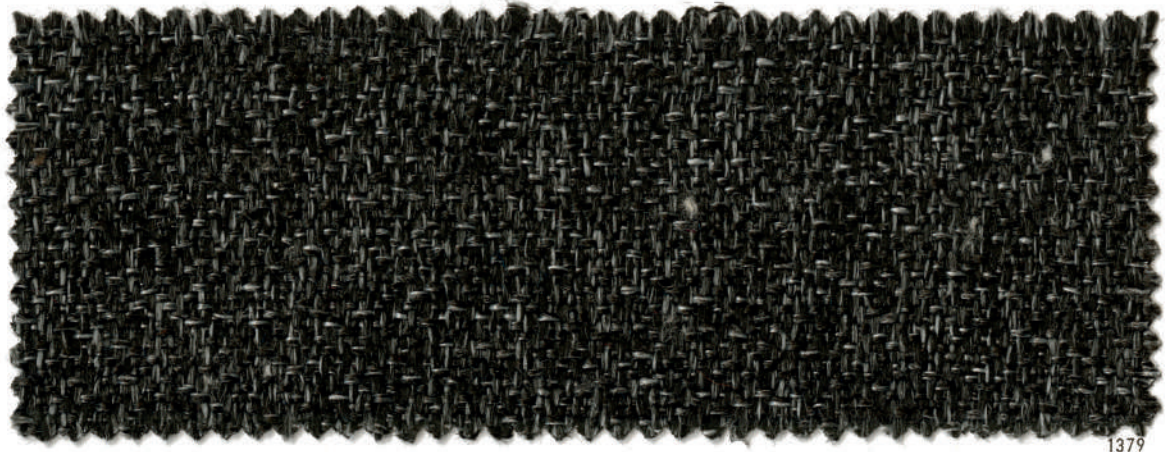
5 ANNI DI GARANZIA/ 5 YEARS WARRANTY

REVISIONE TESSUTI 05-2021/

FABRIC REVIEW 2021-05



DIN 4102-B



1379

 **LUXY.**

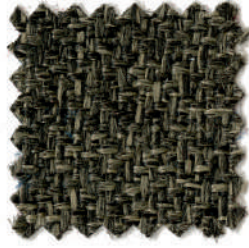
CATEGORIA B/
CATEGORY B

TESSUTO/
UPHOLSTERY

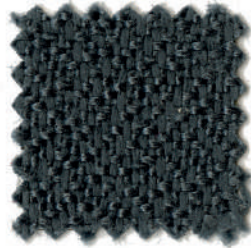
EXPO
 Chioccarello



1399



1367



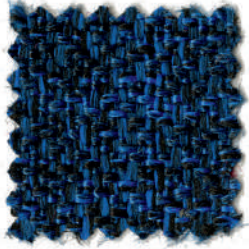
1377



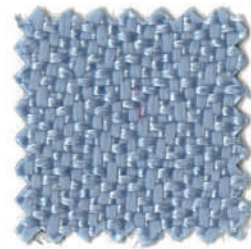
1352



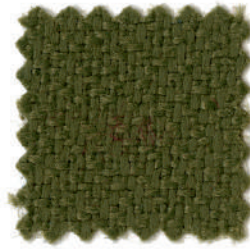
1366



1396



1394



1369



1363





DESTINAZIONI D'USO/ APPLICATIONS
Rivestimenti per imbottiti, casa e contract
Offices, hotels, institutions, domestic use

RESISTENZA ALL'ABRASIONE
(CICLI MARTINDALE)/ ABRASION RESISTANCE
(MARTINDALE CYCLES)
UNI EN ISO 12947-2 >100.000

RESISTENZA ALLO SFREGAMENTO/ FASTNESS
TO RUBBING (EN ISO 105 - X12)
Umido/ Wet 5
Secco/ Dry 5

RESISTENZA ALLA LUCE/ LIGHT FASTNESS
(EN ISO 105 - B02) 5

MANUTENZIONE E PULIZIA/ MAINTENANCE
AND CLEANING
Usare con regolarità aspirapolvere a beccuccio
liscio, senza spazzolare/ Hoover regularly and
don't brush

EXPO

CARATTERISTICHE/ DESCRIPTION
100% propitex FR battereostatico
Altezza 140 cm
Peso 300 g/m²
Tinto a filo
Possono verificarsi differenze di colore

100% propitex FR bacteriostatic
Width 140 cm
Weight 300 g/m²
Yarn dyed
Colour differences may occur

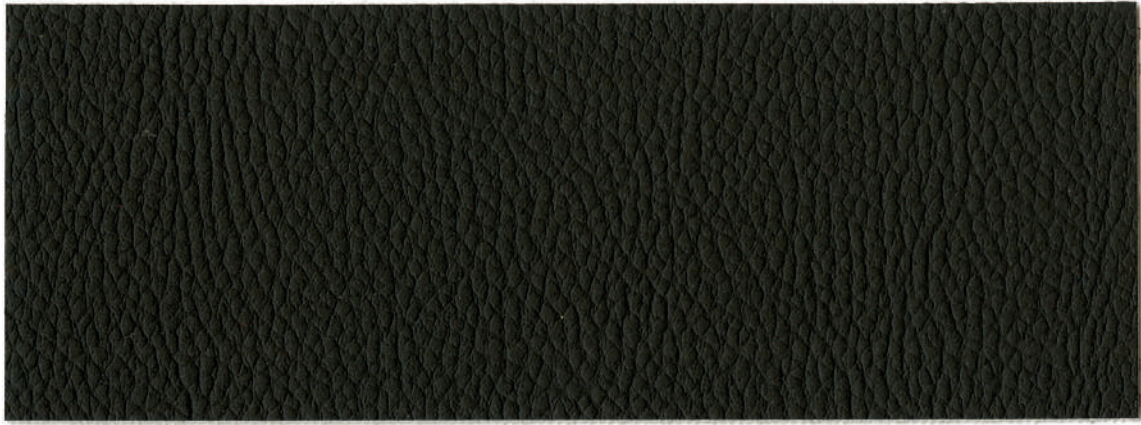
INFIAMMABILITÀ/ FLAMMABILITY
IIM UNI 9175
EN 1021 -1
EN 1021 -2
BS 5852 CRIB 5
TB 117:2013
IMO

ASSORBIMENTO ACUSTICO/
ACOUSTIC ABSORPTION
UNI EN ISO 354:2003

5 ANNI DI GARANZIA/ 5 YEAR WARRANTY

REVISIONE TESSUTI 05-2021/
FABRIC REVIEW 2021-05





1549



CATEGORIA B/
CATEGORY B

TESSUTO/
UPHOLSTERY

SURROUND

LUXO



1532



1522



1502



1501



1520



1547



1503



1544



1506



1533



1531



1543



1507



1509



1516



1527



1510



1539



1517



**DESTINAZIONI D'USO/ APPLICATIONS**

Rivestimenti per imbottiti, casa, ufficio e contract/ Offices, hotels, institutions, domestic use

RESISTENZA ALL'ABRASIONE (CICLI MARTINDALE)/ ABRASION RESISTANCE (MARTINDALE CYCLES)

UNI EN ISO 5470-2 100.000

RESISTENZA ALLO SFREGAMENTO/ FASTNESS TO RUBBING (EN ISO 105 - X12)

Umido / Wet 5
Secco / Dry 5

RESISTENZA ALLA LUCE/ LIGHT FASTNESS (EN ISO 105 - B02)

6/7

RESISTENZA ALLA TRAZIONE/ TENSILE STRENGHT (%)

UNI EN ISO 1421-1
Longitudinale/ Longitudinal 250
Trasversale/ Trasversal 190

ALLUNGAMENTO A ROTTURA/ ELONGATION STRENGHT (%)

UNI EN ISO 1421-1
Longitudinale/ Longitudinal 50
Trasversale/ Trasversal 150

MANUTENZIONE E PULIZIA/ MAINTENANCE AND CLEANING

Usare con regolarità aspirapolvere a beccuccio liscio, senza spazzolare/ Hoover regularly and don't brush

SURROUND**CARATTERISTICHE/ DESCRIPTION**

87,5% polivinilcloruro (PVC) - 12,5% cotone

Altezza 140 cm

Spessore 1 mm

Peso 640 g/m²

Possono verificarsi differenze di colore.

Addizionato con agente antibatterico **TIABEN-DAZOLO**

87.5% polyvinylchloride (PVC) - 12.5% cotton

Width 140 cm

Thickness 1 mm

Weight 640 g/m²

Colour differences may occur

Added with **THIABENDAZOLE** antibacterial agent

INFIAMMABILITÀ/ FLAMMABILITY

11M UNI 9175

EN 1021 -1

EN 1021 -2

BS 5852 - 1

BS 5852 CRIB 5

TB 117:2013

DIN 4102 B

OENORM A380-1:Q1

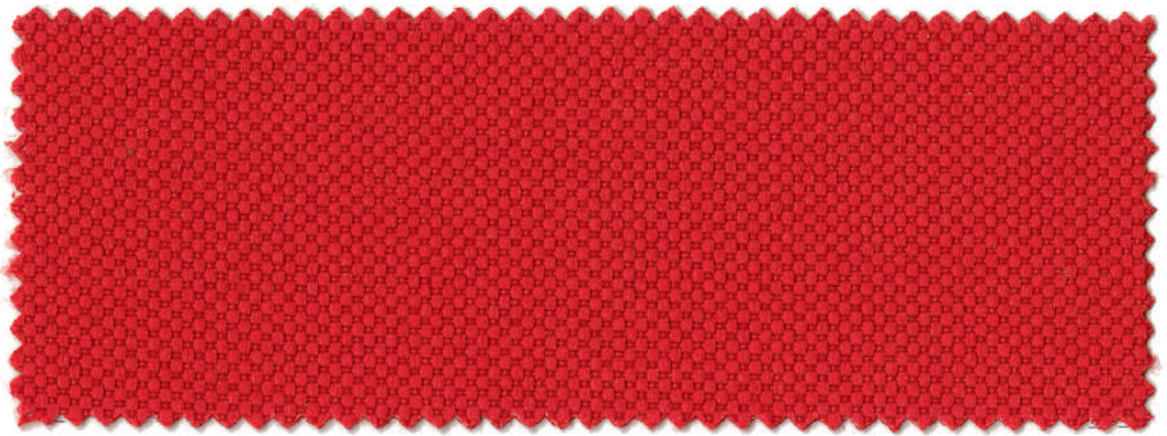
NF P 92-503:M2

5 ANNI DI GARANZIA/ 5 YEARS WARRANTY

REVISIONE TESSUTI 05-2021/

FABRIC REVIEW 2021-05





L259

 **LUXY.**

CATEGORIA B/
CATEGORY B

TESSUTO/
UPHOLSTERY

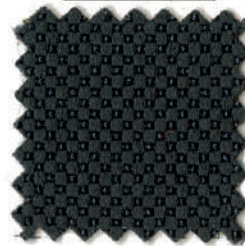
SALÒ
 Chioccarello



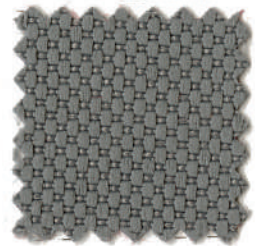
L299



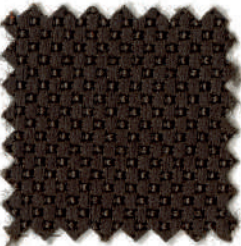
L298



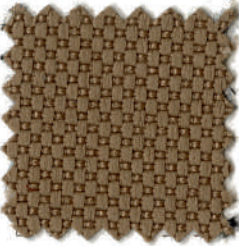
L277



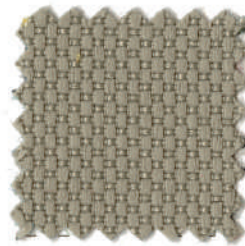
L275



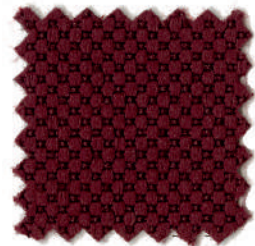
L267



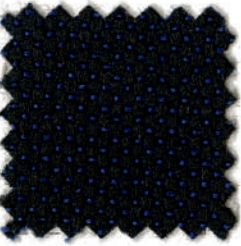
L281



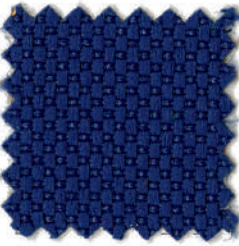
L283



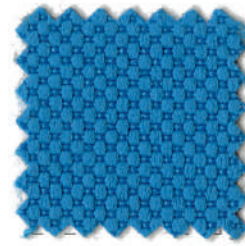
L289



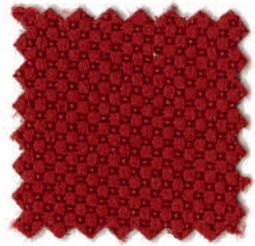
L285



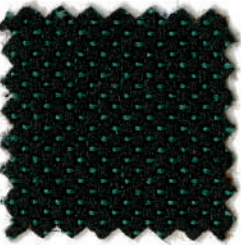
L282



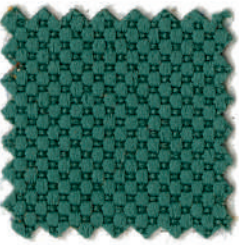
L272



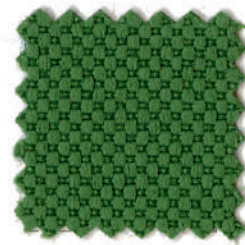
L260



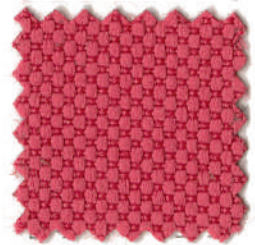
L290



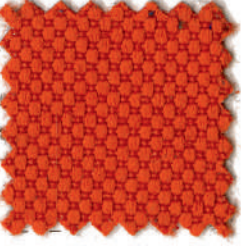
L287



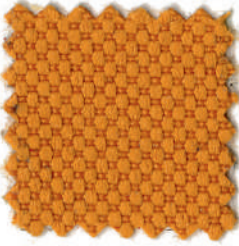
L268



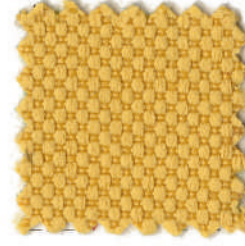
L262



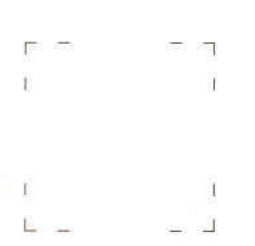
L257



L256



L254





DESTINAZIONI D'USO/ APPLICATIONS
Rivestimenti per imbottiti, casa e contract/
Offices, hotels, institutions, domestic use

RESISTENZA ALL'ABRASIONE
(CICLI MARTINDALE)/
ABRASION RESISTANCE (MARTINDALE CYCLES)
UNI EN ISO 12947-2 100.000

RESISTENZA ALLO SFREGAMENTO/
FASTNESS TO RUBBING (EN ISO 105 - X12)
Umido/ Wet 5
Secco/ Dry 5

RESISTENZA ALLA LUCE/ LIGHT FASTNESS
EN ISO 105 - B02 5

MANUTENZIONE E PULIZIA/ MAINTENANCE
AND CLEANING
Usare con regolarità aspirapolvere a beccuccio
liscio, senza spazzolare/
Hoover regularly and don't brush

SALÒ

CARATTERISTICHE/ DESCRIPTION
100% poliestere FR
Altezza 140 cm
Peso 380 g/m²
Tinto a filo
Possono verificarsi differenze di colore

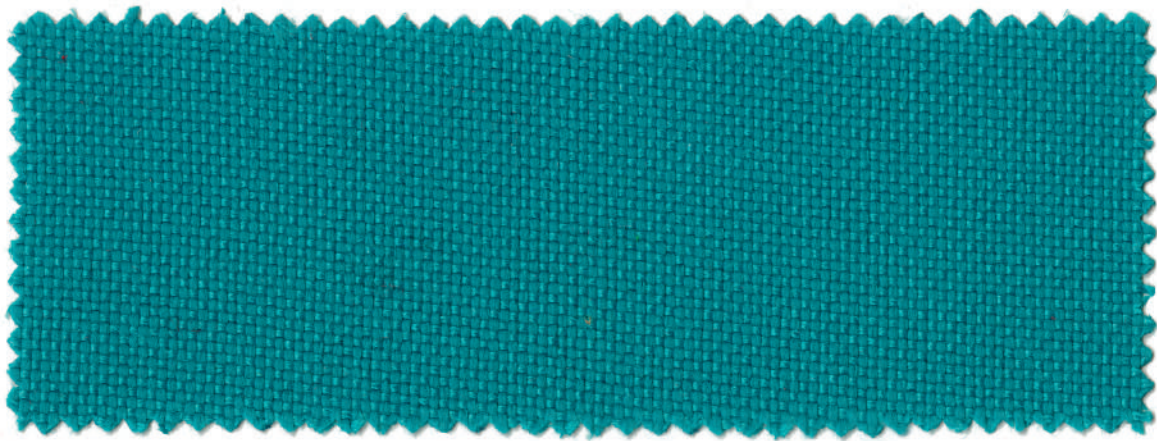
100% polyester FR
Width 140 cm
Weight 380 g/m²
Piece dyed
Colour differences may occur

INFIAMMABILITÀ/ FLAMMABILITY
11M UNI 9175
EN 1021 -1
EN 1021 -2
BS 5852 CRIB 5
TB 117:2013
IMO
M1
B1

5 ANNI DI GARANZIA/ 5 YEAR WARRANTY

REVISIONE TESSUTI 05-2021/
FABRIC REVIEW 2021-05





L097

 **LUXY.**

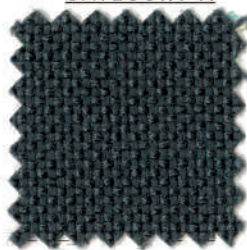
CATEGORIA A/
CATEGORY A

TESSUTO/
UPHOLSTERY

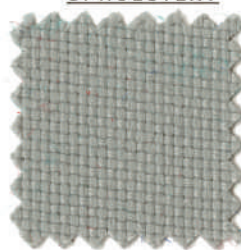
MADRID



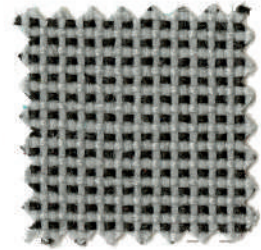
L099



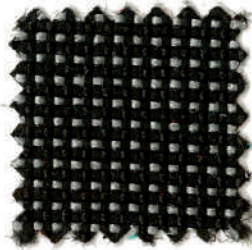
L077



L075



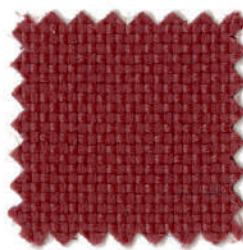
L088



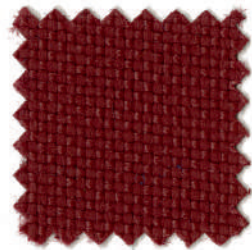
L079



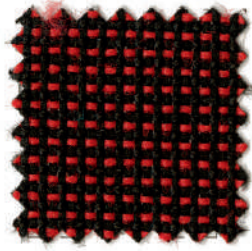
L059



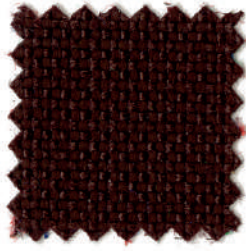
L061



L060



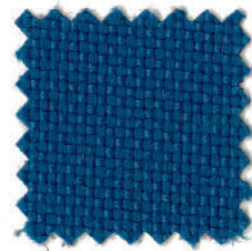
L095



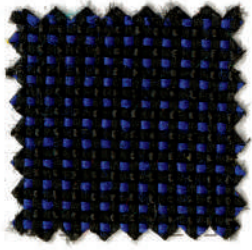
L067



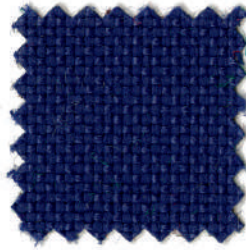
L085



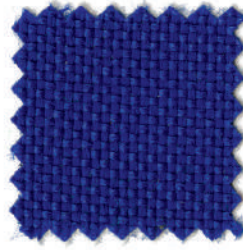
L074



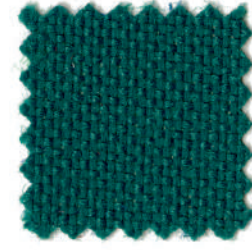
L096



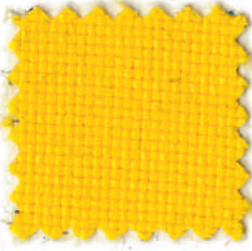
L082



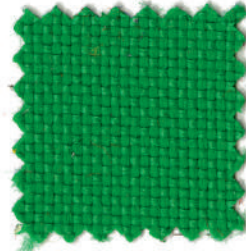
L073



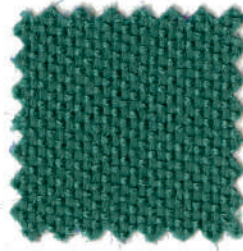
L069



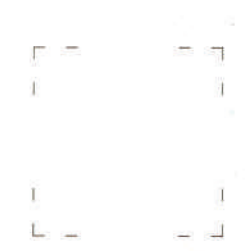
L054



L068



L087





DESTINAZIONI D'USO/ APPLICATIONS
Rivestimenti per imbottiti, casa e contract/
Offices, hotels, institutions, domestic use

**RESISTENZA ALL'ABRASIONE (CICLI)/ ABRASION
RESISTANCE (CYCLES)**
UNI EN ISO 12497-2 100.000

**RESISTENZA ALLO SFREGAMENTO/ FASTNESS
TO RUBBING (EN ISO 105 - X12)**
Umido/ Wet 4/5
Secco/ Dry 4/5

**RESISTENZA ALLA LUCE/ LIGHT FASTNESS
(EN ISO 105 - B02)** 5

**MANUTENZIONE E PULIZIA/ MAINTENANCE
AND CLEANING**
Usare con regolarità aspirapolvere a beccuccio
liscio, senza spazzolare/ Hoover regularly and
don't brush

MADRID

CARATTERISTICHE/ DESCRIPTION
100% polipropilene FR
Altezza 143 cm
Peso 250 g/m²
Tinto a filo
Possono verificarsi differenze di colore

100% polypropylene FR
Width 143 cm
Weight 250 g/m²
Yarn dyed
Colour differences may occur

INFIAMMABILITÀ/ FLAMMABILITY
11M UNI 9175
EN 1021 -1
EN 1021 -2
BS 5852 CRIB 5
TB 117:2013
IMO

ASSORBIMENTO ACUSTICO/ ACOUSTIC ABSORPTION
UNI EN ISO 354:2003

5 ANNI DI GARANZIA/ 5 YEAR WARRANTY

**REVISIONE TESSUTI 05-2021/
FABRIC REVIEW 2021-05**



Luxy.com